

Nikon

COOLPIX 900 Companion Software

Nikon View 900 for Macintosh

Reference Manual

Contents

Overview

Before You Begin

- System Requirements
- Installation

Getting Started

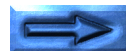
- First Steps
- Choosing a Viewer for Camera Image Files
- Notes on Using the Camera as a Drive

Working with Images

- Viewing the Items in the Camera's Memory
- Copying Images to Disk
- Opening Images in Another Application

Nikon View Browser

- Browsing Images
- Browsing Compact Flash-Memory Cards
- Browsing Images on Disk
- Viewing Images with the Built-in Viewer
- Deleting Images
- Printing Images
- Changing the Appearance of Thumbnails
- Copying Images to Disk
- Opening Images in Another Application



Nikon View 900 Reference

Nikon View 900 Control Strip Item
The CoolPix 900 Control Panel
The CoolPix 900 Folder
The Browser Window
Image Windows

Trademark Information

Apple, the Apple logo, Macintosh, and Quick Time are registered trademarks of Apple Computer, Inc. Finder, Macintosh PC Exchange, Power Macintosh and PowerBook are trademarks of Apple Computer, Inc.

Adobe and PhotoDeluxe are registered trademarks, and Photoshop a trademark, of Adobe Systems Inc.

ActiveWire™©1994-1998 by PicoStar, LLC, Palo Alto, CA, All Rights Reserved.

CompactFlash is a trademark of SanDisk Corporation.

Internet is a trademark of Digital Equipment Corporation.

Internet Explorer is a product of Microsoft Corporation.

Netscape and Netscape Navigator are registered trademarks of Netscape Communications Corporation.

PowerPC is a trademark of International Business Machines Corporation, used under license.

Slides & Sound Plus is a trademark of InMedia Presentations, Inc.

All other brand or product names mentioned in this manual are the trademarks or registered trademarks of their respective holders.

Cautions

- The reproduction of this manual in whole or in part is prohibited save where Nikon's prior permission has been obtained.
- The information contained in this manual is subject to change without notice.
- Nikon has made every effort to produce a perfect manual, but should you find any mistakes, we would be grateful if you would kindly let us know. The address of the Nikon representative in your area is provided separately.
- Nikon is not liable for damages resulting from the use of this product.



Warning!

The CD-ROMs on which the software and manuals are distributed should not be played back on audio CD equipment. Playing CD-ROMs on an audio CD player could cause hearing loss or damage the equipment.

Notice concerning prohibition of copying or reproduction

Note that simply being in possession of material which has been copied or reproduced by means of a digital camera may be punishable by law.

Items prohibited by law from being copied or reproduced

Do not copy or reproduce paper money, coins, securities, government bonds, or local government bonds, even if such copies or reproductions are stamped “Sample.”

The copying or reproduction of paper money, coins, or securities which are circulated in a foreign country is prohibited.

The copying or reproduction of unused postage stamps or post cards issued by the government without obtaining approval from the government is prohibited.

The copying or reproduction of stamps issued by the government and certified documents stipulated by law is prohibited.

Cautions on certain copies and reproductions

The government has issued cautions on copies or reproductions of securities issued by private companies (shares, bills, checks, gift certificates, etc.), commuter passes, or coupon tickets, except when a minimum of necessary copies are to be provided for business use by a company. Also, do not copy or reproduce passports issued by the government, licenses issued by public agencies and private groups, ID cards, and tickets, such as passes and meal coupons.

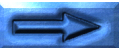
Comply with copyright notices

The copying or reproduction of works such as books, music, paintings, woodcut prints, maps, drawings, movies, and photographs which are copyrighted creative works is prohibited except when it is done for personal use at home or for similar restricted and non-commercial use.

Welcome to **Nikon View 900 for Macintosh**, a companion program for the COOLPIX 900. **Nikon View 900** allows you to connect your camera to a Macintosh for quick retrieval and browsing of the images stored in your camera. Once **Nikon View 900** is installed on your Macintosh, the camera can be used like any other drive, allowing free access to images in the camera via standard Mac OS file operations. **Nikon View Browser** is also provided, making it possible to display the contents of the camera's memory as thumbnail images. Once you have installed **Nikon View 900** and mastered its simple operation, you'll be able to distribute your digital photographs by disk or electronic mail, or include them in your home page and other documents you create for business or personal use.

Nikon View 900's features include those listed below.

- a driver function that supports connection to your camera and allows you to operate your camera's memory like any other drive
- thumbnails viewed in **Nikon View Browser** can be copied to disk or opened in other applications using drag and drop
- images in the camera's memory can be handled using standard Mac OS file operations
- images can be opened in any application that supports JPEG for retouching or to be saved in another format, allowing you to use images as desktop pictures or distribute them by electronic mail
- if you have a compact flash-memory reader or a PCMCIA card slot and card adapter, the COOLPIX 900's compact flash-memory cards can be browsed even when not inserted in the camera



This manual will guide you, step-by-step, through the process of setting up and using **Nikon View 900** with your COOLPIX 900. The contents of each chapter are outlined below.

Overview

Describes **Nikon View 900**'s features and outlines the contents of this manual

Before You Begin

Explains how to install **Nikon View 900** on your Macintosh

Getting Started

A tutorial introduction to **Nikon View 900**

Working with Images

Explains how to access images stored in the camera's memory, open them in other applications for editing, and copy them to disk

Nikon View Browser

Describes how to display images as thumbnails, view images, and copy them to disk using **Nikon View Browser**

Nikon View 900 Reference

A handy reference guide to **Nikon View 900**'s main windows

Note: *The illustrations and explanations in this manual are for Mac OS 8.0. Display and operation may differ slightly in other versions of Mac OS. Refer to the System Software manual for the version you are using.*

Before You Begin

This chapter gives the system requirements for *Nikon View 900 for Macintosh* and guides you through the process of installing *Nikon View 900* to your computer's hard disk.

Note: *This manual assumes a basic understanding of common Mac OS operations. If you are in doubt about the meaning of terms used here, refer to your Mac OS manual.*

System Requirements

To run *Nikon View 900 for Macintosh*, you will need system hardware and software which meet the following minimum requirements:

- a Macintosh or Power Macintosh with a Power PC601 or later, or a 68040 or later CPU
- System Software 7.5.1 or later
- at least 8 MB of free RAM
(12 MB or more is recommended)
- 5 MBs of free space on your hard-disk for installation, with an additional 20 MBs of free space when *Nikon View 900* is running
- a monitor with a resolution of 640 × 480 pixels or higher, capable of displaying 256 colors, 32000 colors or 16.7 million colors
- a CD-ROM drive for installation
- a modem or printer port for connection to the COOLPIX 900

Installation

The installation disk provided with this product contains the **Nikon View 900** browser software and drivers which handle the exchange of information between your Macintosh and the COOLPIX 900. Before starting the installation program, check to be sure that you have enough space on your hard disk to complete installation (a minimum of 25 MBs of free disk space is required), and that no other applications are running.

Step 1 — Launch the Nikon View 900 installer

When the Nikon View 900 CD-ROM is inserted in the CD-ROM drive, a window containing folders for each of the languages in which **Nikon View 900** is available will appear on the desktop.



Note: The CD packaged with cameras sold in the U.S.A. does not include the French and German versions of Nikon View 900.

Note: The “InMedia Presentations Inc” folder contains installers for Slides & Sound Plus, QuickTime, and other applications. Information on these products may be found in the README file.

Open the folder containing the installer for the language of your choice and double-click the **Nikon View 900 Installer** icon. Note that the illustrations in this manual are for the English version of **Nikon View 900**.

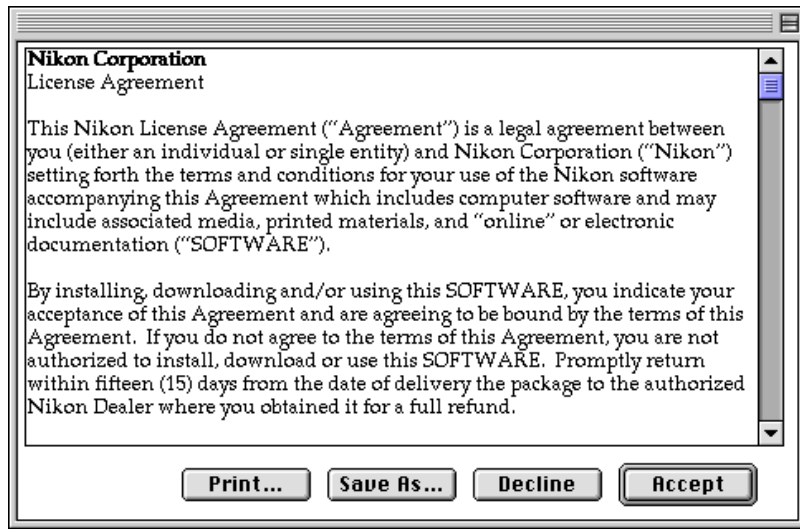


The following dialog box will appear on the desktop.



Step 2 — Accept the license agreement

Clicking **Continue...** displays the following license agreement dialog.

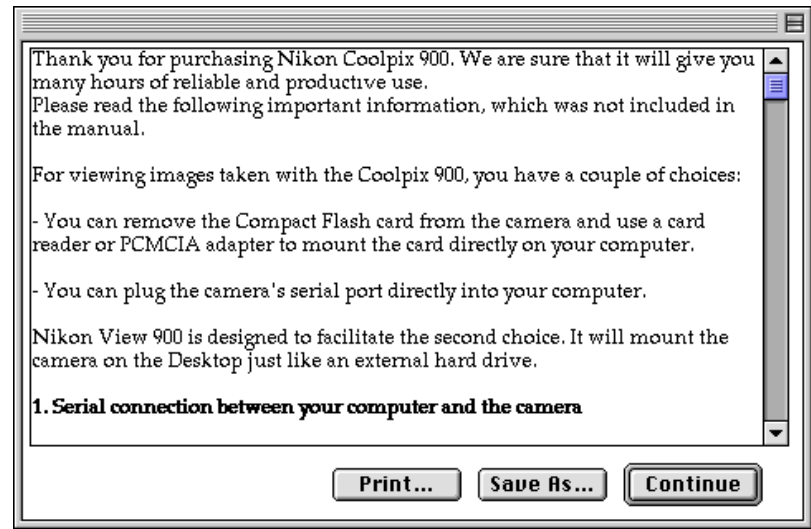


If, after reading the agreement carefully, you accept its contents, click **Accept** to continue installation. Clicking **Decline** will terminate installation. Installation can be begun again at any time by repeating the installation process from Step 1.

The license agreement can be saved as a text file in the location of your choice by clicking the **Save As...** button. A copy will also be saved automatically in the same folder as **Nikon View 900** when installation is complete. Click **Print...** to print the license agreement.

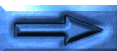
Step 3 — View the README file

Clicking **Accept** in the license agreement dialog displays the Nikon View 900 README file.



It is recommended that you take a few moments to print or view the contents of this file, as it may contain important information that could not be included in this manual. When you have finished, click the **Continue** button to bring up the Nikon View 900 Installer dialog box shown in Step 4.

When installation is complete, a copy of the README file will be saved in the folder to which you have installed **Nikon View 900**.



Step 4 — Choose an installation type

The pop-up menu at the top left corner of the installer dialog offers a choice of “Easy Install” and “Remove” options.



Choose “Easy Install” to install *Nikon View Browser*, *ActiveWire™ E900*, *Nikon View 900*, *Nikon CoolPix 900 Mounter*, and *Nikon View Control Strip*. Choosing “Remove” allows you to delete existing copies of *Nikon View 900* or any of its components.

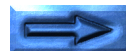
The **Go to Nikon Home Page** and **Read Me...** buttons are explained below.

Go to Nikon Home Page

If you have a connection to the Internet, clicking this button will start your Web browser and take you to the user support page for your region. One of *Netscape Navigator 3.0* or later or *Internet Explorer 3.0* or later is required.

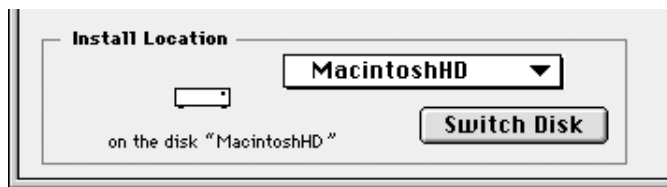
Read Me...

Returns you to the README dialog shown in the previous step.

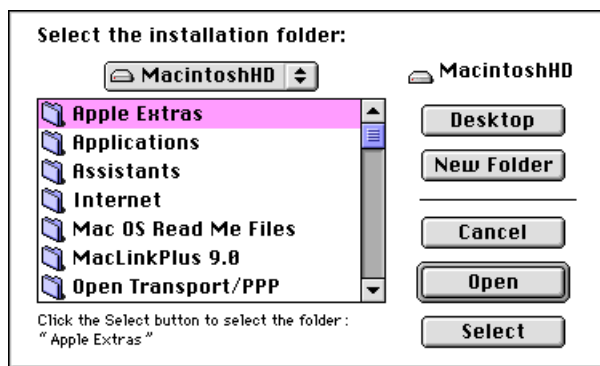


Step 5 — Select a location for Nikon View Browser

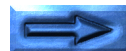
Use the **Switch Disk** button in the Nikon View 900 Installer dialog box to choose the disk to which you will install *Nikon View Browser*. A different disk will be displayed each time the button is clicked.



The destination disk can also be selected from the pop-up menu above the **Switch Disk** button. Choosing **Select Folder...** from this menu displays a dialog that allows you to navigate to the folder to which you wish to install *Nikon View Browser*.



Click the destination folder once to select it and then click **Select** to choose it as the destination folder. Clicking **Cancel** returns you to the installer dialog without changing the destination disk and folder. *Nikon View Browser* will be installed in a "*Nikon Software|Nikon View 900*" folder within the selected disk and folder.

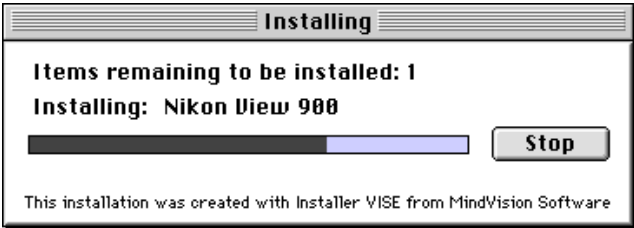


Step 6 — Install Nikon View 900

Clicking **Install** in the Nikon View 900 Installer dialog starts installation. If you already have an earlier version of *Nikon View 900* installed on your system, the following dialog will appear warning you that the earlier version will be replaced by the version now being installed.



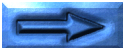
Click **No** to terminate installation, leaving the earlier version untouched, or **Yes** to begin installation of the new version. While the program's components are being installed to your hard disk, the following progress indicator will be displayed.



Clicking **Stop** will display the message shown below.



Click **Resume** to continue the installation from the point it was interrupted. Clicking **Stop** will halt the installation without installing *Nikon View 900*. Should you choose to abandon the installation, you can still install *Nikon View 900* at a later date by repeating the installation process from Step 1.



Step 7 — Complete installation

When installation is complete, the following dialog box will be displayed.



The buttons in this dialog box are explained below.

Continue

Returns you to the Nikon View 900 Installer dialog box shown in Step 4.

Quit

Ends installation and returns you to the Finder. You will need to restart your computer before you will be able to use *Nikon View 900*.

Restart

Ends installation and restarts your computer.

Note: *ActiveWire™ E900 will be installed in the Extensions folder. When installing the software for the first time or re-installing ActiveWire™ E900, it will be necessary to restart your computer.*

Getting Started

Once you have installed the **Nikon View 900** software as described in “**Before You Begin**,” you are ready to use your computer to view the contents of your COOLPIX 900’s memory or to copy images to your computer for editing and storage. This chapter provides a brief introduction to **Nikon View 900**’s functions, and outlines the steps you will take when using the program with your COOLPIX 900.

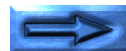
First Steps

This section guides you step-by-step through the basics of using **Nikon View 900** to access the images stored in your camera’s memory, copy them to disk, and open them in other applications. It also introduces you to using **Nikon View Browser** to view images in your camera as thumbnail previews and full-resolution images, and copy them to disk. More detailed information can be found in the following chapters, “**Working with Images**” and “**Nikon View Browser**.” An overview of the program’s windows and menus may be found in “**Nikon View 900 Reference**.”

Step 1 — Connect the COOLPIX 900 to Your Computer

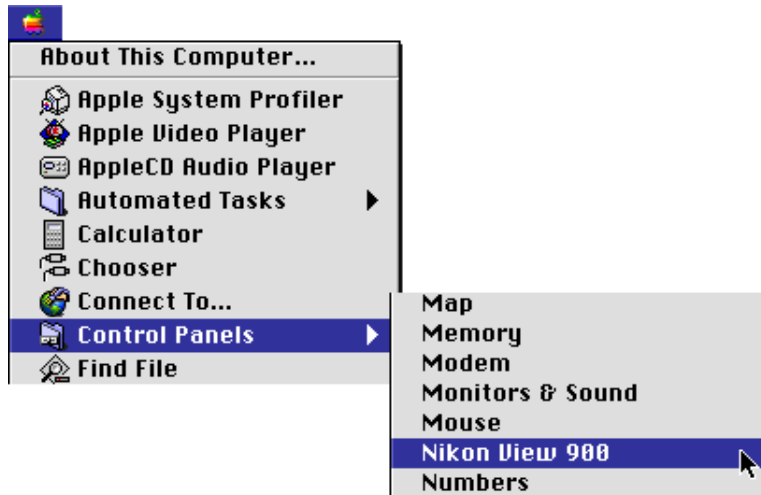
Connect the camera to your Macintosh as described in the **COOLPIX 900 User’s Guide**.

✓ **Caution:** When running the camera on battery power, check the battery level before connecting the camera. If the battery level is low or critical, replace the batteries or use the AC adapter (sold separately). If battery level falls to low or critical while the camera is connected, disconnect the camera and replace the batteries or connect the AC adapter. Operating the camera at low battery levels could result in communication problems.



Step 2 — Mount the camera

After turning on your Macintosh, choose **Nikon View 900** from the **Control Panels** submenu of the Apple menu (🍏).



The CoolPix 900 control panel will be displayed.



The communications port, cache memory size, and other settings can be specified using the following options.

Port

Click the arrow button to the right of this option to choose a port from a pop-up menu. The following choices are available:

Modem Port Select the camera connected to the modem port

Printer Port Select the camera connected to the printer port

If you have two cameras, one connected to the modem port and the other to the printer port, you can switch between camera's on different ports.



Note: *PowerBook users who have connected the camera to the printer/external modem port should turn AppleTalk off and then select “Modem Port” in the CoolPix 900 control panel.*

Cache

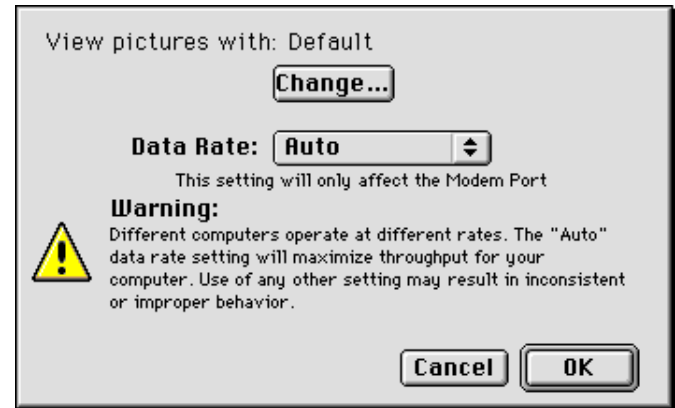
Choose a cache memory size using this slider. When the camera is first connected as a drive, image data from the camera are stored temporarily in cache memory. When thumbnails are displayed or images copied from the camera to disk or opened in other applications, data will be read from the memory cache, speeding processing. The larger the size of the cache, the more noticeable the effect will be. It is recommended that you specify as large a cache as your computer's free memory will allow.

Create Thumbnails

When this box is checked, thumbnail previews of the images in the camera will be created when the camera is first connected as a drive. These thumbnails will be displayed in **Nikon View Browser** and in the Open dialog box when viewing images in the CoolPix 900 drive. A **Browse Thumbnails** icon will also be visible in the CoolPix 900 folder (this folder shows the contents of the camera's memory). Double-clicking this icon will start **Nikon View Browser**.

Options...

Clicking this button displays the following dialog:



Using the options in this dialog, it is possible to choose the application used to open camera files and to set the speed of the connection between the camera and the computer's modem port.

View pictures with

The name of the application used to open image files in the camera's memory is listed here. By default, the application used is Adobe PhotoDeluxe. To use a different application, click the **Change...** button. In the dialog that appears, navigate to a folder containing an application that supports viewing of JPEG images and double-click the application to select it (for details, see “*Choosing a Viewer for Camera Image Files*,” below).



Data Rate

The data transfer rate used when the camera is connected to the computer via the modem port can be chosen from this pop-up menu. Choose **Auto** to have **Nikon View 900** automatically select a speed suited to your Macintosh.

Note: *Depending on your set-up, auto data-rate detection may not perform as expected. Should you experience problems reading the data stored in the camera, select a new speed from the **Data Rate** menu. If you still experience difficulties at the highest available rate, choose successively lower speeds until you find one that works.*

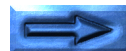
Once you have completed any changes to options, click **OK** to return to the CoolPix 900 control panel.

Once any changes to settings have been made, click **Mount Now** to connect the camera. The following message will be displayed while the computer connects to the camera.

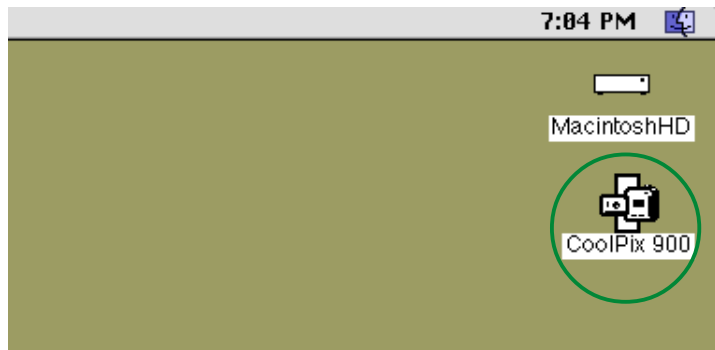


The data-transfer icon in the camera's control panel will flash, indicating that the computer has initiated communications with the camera.

✓ Caution: *The data-transfer icon (↔) will continue to flash for up to sixty seconds after transfer of data is complete. Do not disconnect the camera while the icon is flashing.*



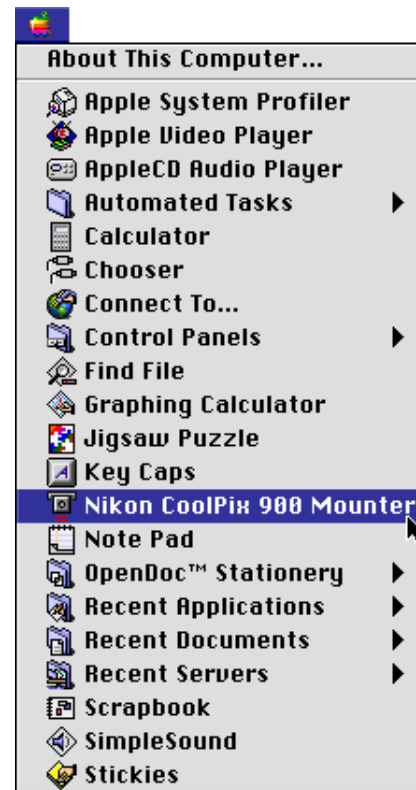
Once the camera has been selected as a drive, a **CoolPix 900** icon will appear at the right side of the desktop with the computer's other drives.



Note: If Nikon View 900 is unable to locate the camera, an alert dialog will appear. After clicking **OK** in the dialog, check that the camera and computer are connected and that the camera's selector dial is not set to OFF. If the data transfer icon is not showing in the camera's control panel, check whether the serial cable is properly connected and that the batteries are properly inserted and are not dead. If you are using the AC adapter, be sure that it is properly connected.

Mounting the camera without changing port and cache settings

Once you have connected to the camera using the CoolPix 900 control panel to specify a port, cache size, and other settings, the next time you want to connect to your camera using the same settings you can connect directly without using the CoolPix 900 control panel. To connect directly to the camera, choose **Nikon CoolPix 900 Mounter** from the Apple menu (🍏).

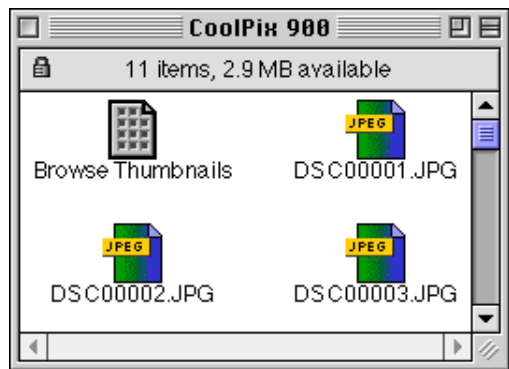


Step 3 — View the contents of the camera's memory

To view the contents of the camera's memory, double-click the **CoolPix 900** icon.



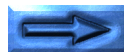
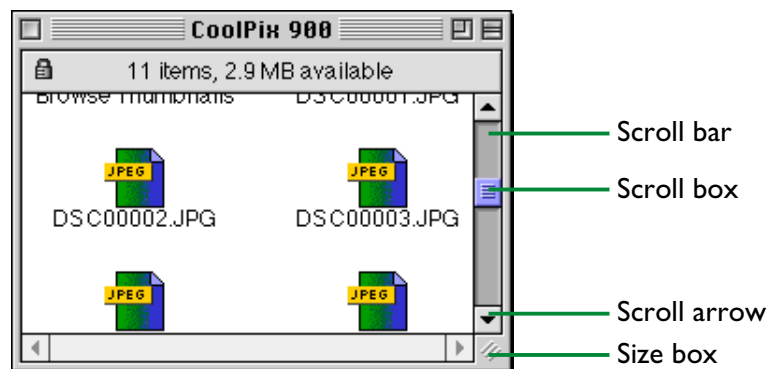
The CoolPix 900 folder will appear on the desktop. The images in the camera's memory will be displayed as icons (if no images are in memory, the window will be empty).



Note: When images are read directly from the camera, the creator program is set to the application specified in the CoolPix 900 control panel. The icons that appear in the CoolPix 900 folder will differ depending on the application specified. If the default creator, Adobe PhotoDeluxe, is used and Adobe PhotoDeluxe is installed on your system, icons in the CoolPix 900 folder will appear as shown above. If the specified application is not installed on your system, a blank document icon will be used.

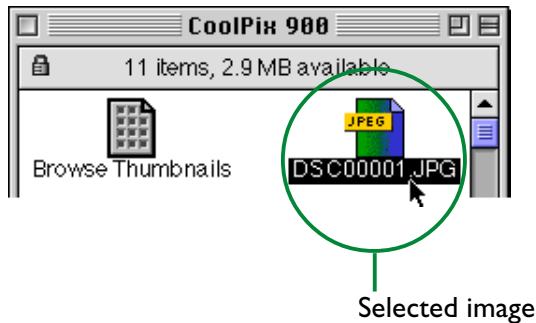
The illustrations in this manual show the icons that appear when Adobe PhotoDeluxe is selected as the creator program.

If there are a large number of images in the camera, not all can be displayed at once in the CoolPix 900 folder. You can view hidden icons by dragging the scroll boxes at the right and bottom of the window, or by clicking the scroll bars or scroll arrows. Alternatively, you can enlarge the window itself dragging the size box at its lower left corner.



Step 4 — Select images

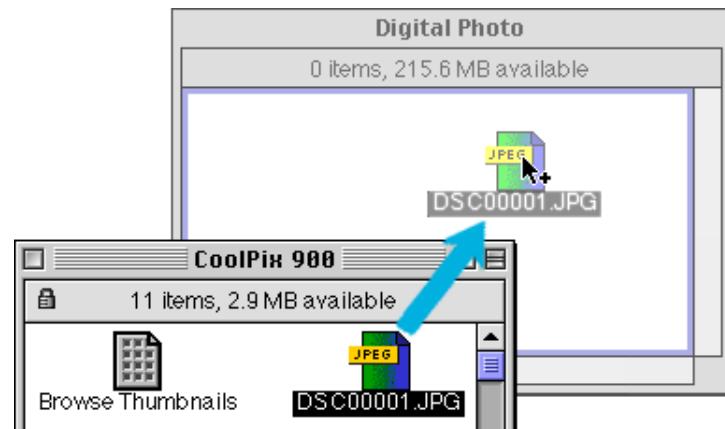
Images in the CoolPix 900 folder can be printed or copied to disk. The images on which such operations are to be performed can be selected by clicking the associated icon once. The icon will be highlighted to indicate that it has been selected.



Multiple images can be selected by holding down the **Shift** key on the keyboard while clicking each image in turn. All images in the camera can be selected by choosing **Select All** from the **Edit** menu.

Step 5 — Copy selected images to disk

Before copying images to disk, locate or create the destination folder. Selected images can be copied to a new location by dragging any of the images into the destination folder and releasing the mouse button (to "drag" an item means to click it and move it while holding down the mouse button). This is known as "drag and drop." If multiple images are selected, all will be copied to the new location.



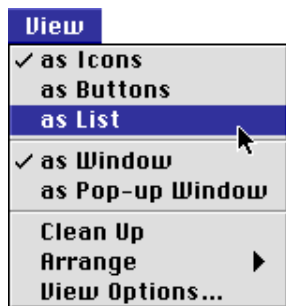
Note: The CoolPix 900 folder is locked. Images dragged to another location will always be copied rather than moved, even if the option key is not held down.

Note: It is recommended that you change the filename of images after copying them to disk to make file management easier and to avoid accidentally overwriting an image file with another image of the same name.

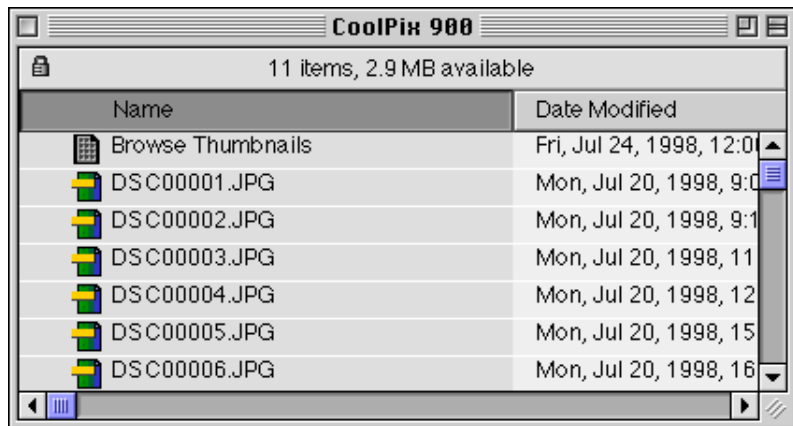


Displaying image files as a list

To view information on the image's date of recording, a list-style display can be chosen by selecting **as List** from the **View** menu.



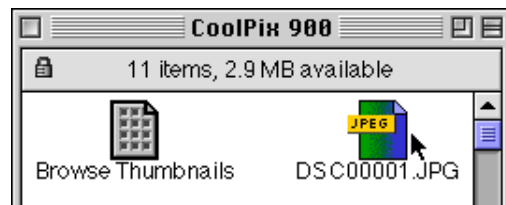
The list-style display is shown below.



To view the images as icons once more, select **as Icons** from the **View** menu.

Step 6 — Open images in another application

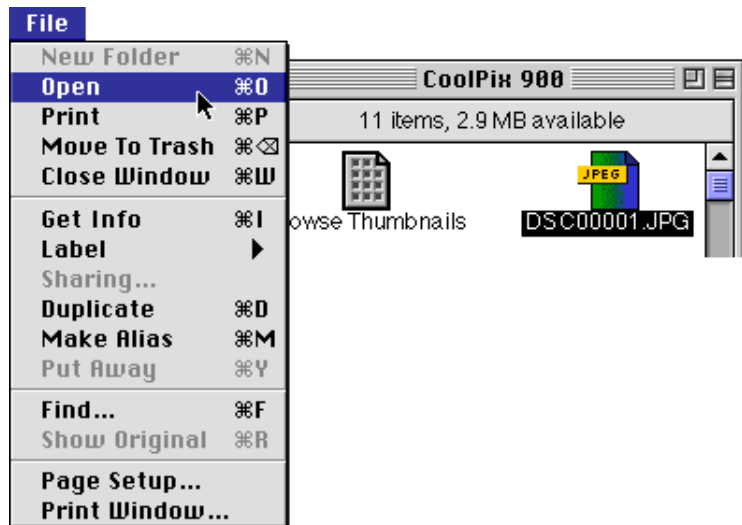
In the CoolPix 900 folder, double-click any of the selected icons.



The associated application (by default, Adobe PhotoDeluxe) will start and the selected images will be opened in windows within that application.



Images can also be opened by choosing **Open** from the **File** menu.

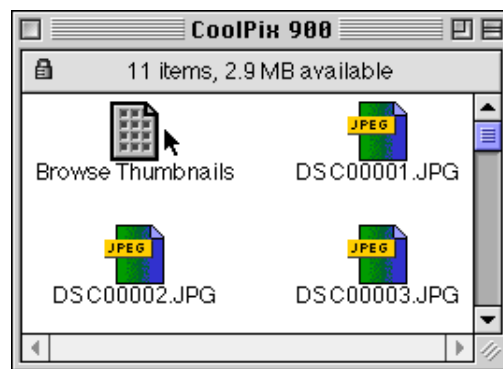


Note: The application used to open camera image files can be selected from the CoolPix 900 control panel. If the specified application is not installed, when you attempt to open a image a dialog will appear prompting you to choose the application to be used. Choose a JPEG-capable application from the dialog box.

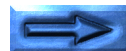
Step 7 — Display thumbnails with Nikon View Browser

Nikon View Browser allows you to browse the contents of the camera's memory and select thumbnails for printing or copying to disk. You can also use the browser's built-in viewer to open images for viewing.

To start *Nikon View Browser*, double-click the **Browse Thumbnails** icon in the CoolPix 900 folder.



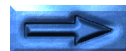
Note: The **Browse Thumbnails** icon is only visible if the **Create Thumbnails** item in the CoolPix 900 control panel was checked when the camera was mounted.



Nikon View Browser will start and a browser window will open showing the contents of the camera's memory as large thumbnail previews.



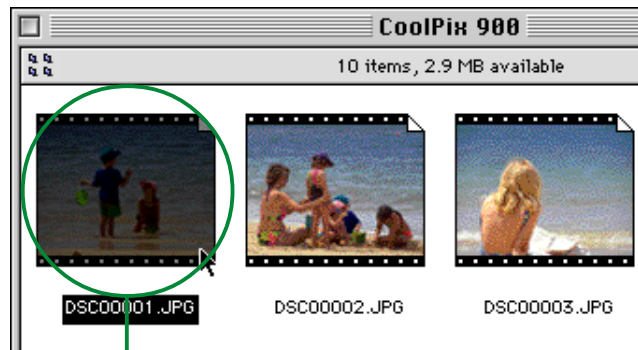
Thumbnails not visible in the window can be viewed by dragging the scroll boxes at the right and bottom of the window, or by clicking the scroll bars or scroll arrows. Alternatively, you can enlarge the window itself dragging the size box at its lower left corner.



Basic operations in the browser window are described below.

Selecting images

Click the image you wish to use. Selected images are highlighted.

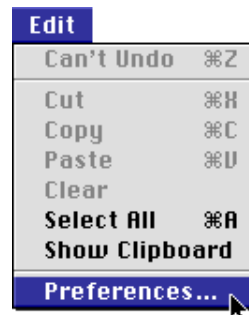


Selected image

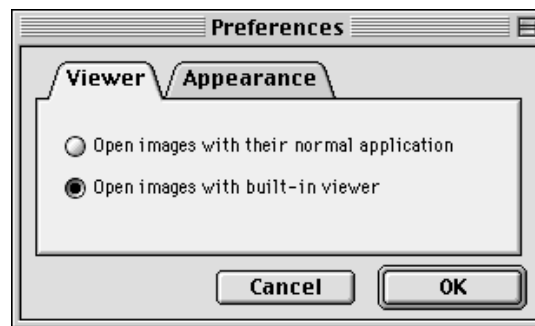
Multiple images can be selected by holding down the **Shift** key on the keyboard while clicking each image in turn.

Viewing images with the built-in viewer

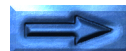
Nikon View Browser provides a built-in viewer for viewing images at full resolution. Images can be opened in the built-in viewer if it has been chosen in the Preferences dialog box. To open the Preferences dialog, choose **Preferences...** from the browser's **Edit** menu.



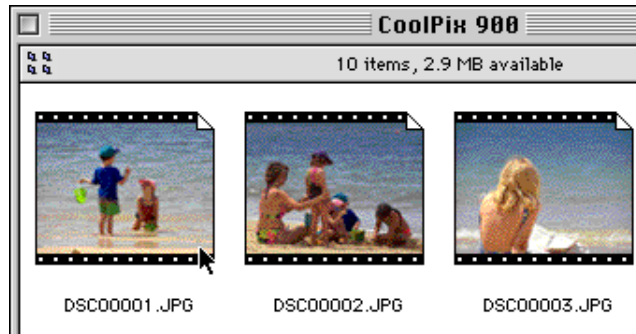
The Preferences dialog box will be displayed. Click the **Viewer** tab.



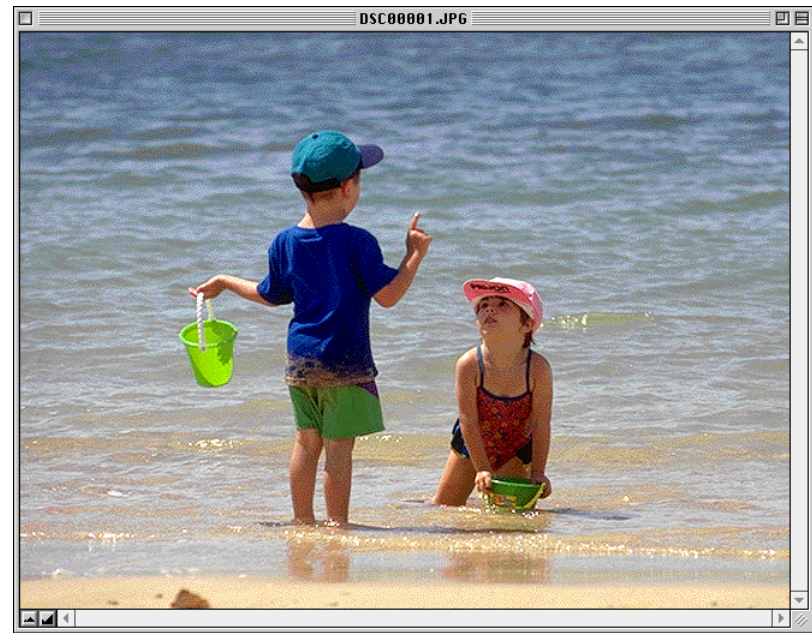
Select **Open images with built-in viewer** and click **OK**.



Once the built-in browser has been selected in the Preferences dialog, images can be opened by double-clicking the associated thumbnail in the browser window or selecting the thumbnail and choosing **Open** from the **File** menu.

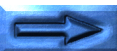


The selected images will be opened in image windows at full resolution.



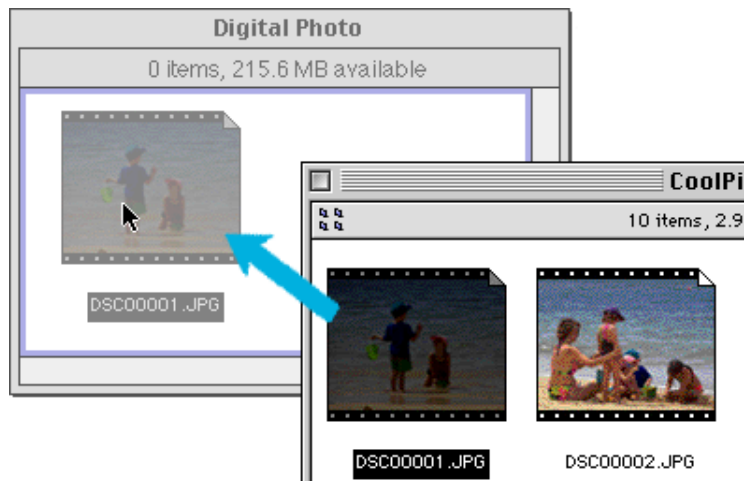
To close an image window, choose **Close Window** from the **File** menu or click the close box at the left end of the window's title bar.

Note: *If Open images with their normal application is selected in the Viewer tab of the Preferences dialog, images will be opened in the application specified in the CoolPix 900 control panel.*



Copying images to disk

Selected images can be copied to disk by dragging their thumbnails to a new location and releasing the mouse button.



Note: The “CoolPix 900” camera drive is always locked. Images dragged to another location will always be copied rather than moved, even if the option key is not held down.

Exit Nikon View Browser

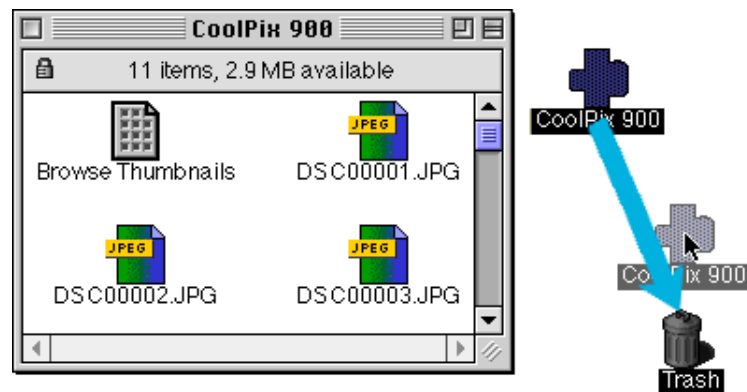
To exit *Nikon View Browser* and close the browser window, choose **Close Window** or **Quit** from the **File** menu, or click the close box at the left end of the title bar.

Step 8 — Unmounting the camera

When you turn off your Macintosh, the camera will be unmounted automatically. To unmount the camera without turning off the computer, use one of the methods given below.

Drag the CoolPix 900 icon into the Trash

The camera can be unmounted by dragging the **CoolPix 900** icon into the Trash.



The CoolPix 900 folder will close and the **CoolPix 900** icon will disappear from the desktop.



Select Nikon View 900 Mounter from the Apple menu

Select **Nikon CoolPix 900 Mounter** from the Apple menu (🍏). The following message will be displayed.



The CoolPix 900 folder will close and the **CoolPix 900** icon will disappear from the desktop.

Alternatively, you can choose **Nikon View 900** from the **Control Panels** submenu of the Apple menu (🍏) and click **Unmount Now** in the CoolPix 900 control panel.

Step 9 — Using the control strip for easy access

When *Nikon View 900* is installed, a *Nikon View 900* item is added to the Macintosh control strip (note that as not all Macintosh computers support the control strip function, you may not be able to use this item on your computer). This item can be used for easy access to such operations as mounting and unmounting the camera or opening image files.

First, open the control strip by clicking the tab. The *Nikon View 900* item will be displayed as shown below.

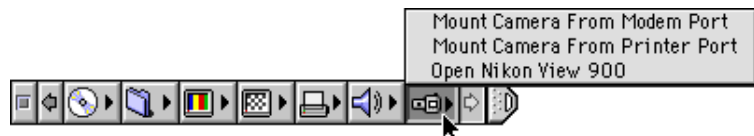


Note: *If the control strip is not visible on the desktop, it can be displayed by choosing **Control Strip** from the **Control Panels** submenu of the Apple menu (🍏) and selecting the **Show Control Strip** radio button.*



Mounting the camera

When the camera is not mounted, clicking the **Nikon View 900** item in the control strip causes the following menu to be displayed:



Mount Camera From Modem Port

Mount the camera currently connected to the computer's modem port.

Mount Camera From Printer Port

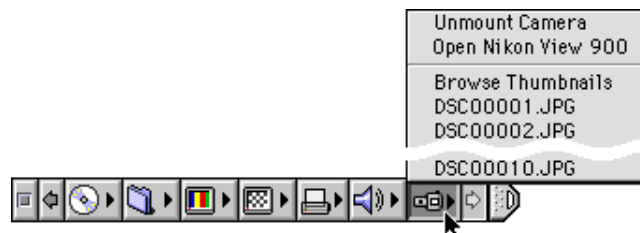
Mount a camera connected to the printer port.

Open Nikon View 900

Opens the CoolPix 900 control panel, which can be used to mount or unmount the camera and make changes to such options as cache size and port speed.

Options available when the camera is mounted

When the camera is mounted, clicking the **Nikon View 900** item causes the following menu to be displayed:



Unmount Camera

Remove a currently mounted camera from the desktop.

Open Nikon View 900

Opens the CoolPix 900 control panel, which can be used to mount or unmount the camera and make changes to such options as cache size and port speed.

Browse Thumbnails

Starts *Nikon View Browser*.

Note: The **Browse Thumbnails** command is only visible if the **Create Thumbnails** item in the CoolPix 900 control panel was checked when the camera was mounted.

Image files

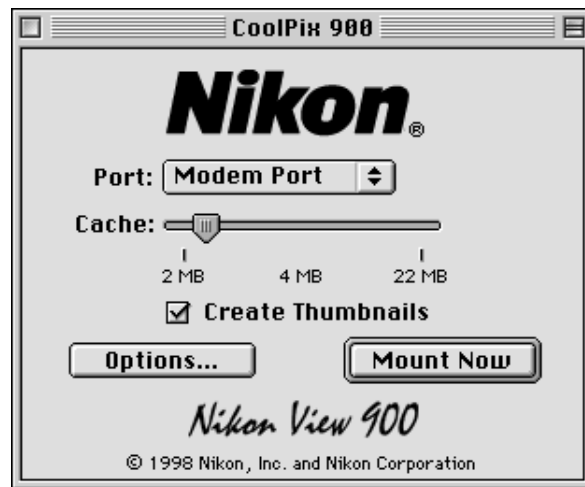
The image files currently in the camera's memory are listed at the bottom of the menu. Selecting a file causes it to be opened in the application specified in the CoolPix 900 control panel.

Choosing a Viewer for Camera Image Files

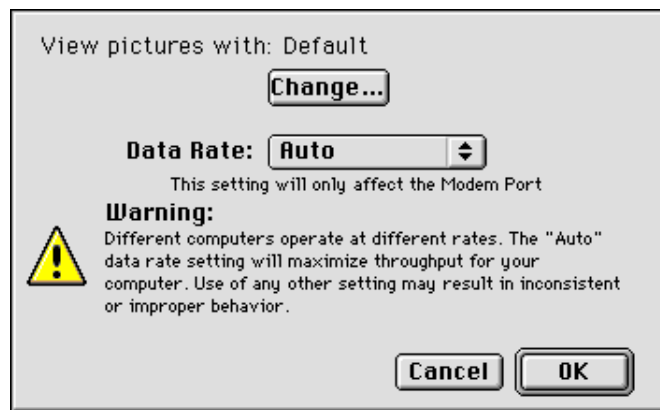
When an image file icon in the CoolPix 900 folder is double-clicked, or when **Open** is chosen from the **File** menu when an image file icon is selected, the associated application will start automatically and the image will be opened in a window within the application (the same applies to images viewed in the browser window, if **Open images with their normal application** has been selected in the Preferences dialog). The application used to open images can be changed using the CoolPix 900 control panel.

Selecting an application

Choose **Nikon View 900** from the **Control Panels** sub-menu of the Apple menu (🍏). The CoolPix 900 control panel will appear.

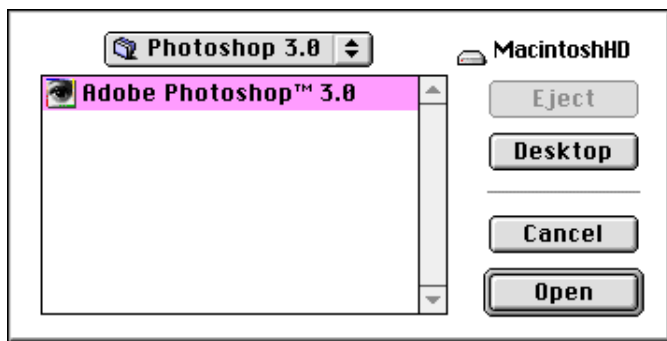


Click **Options...** to display the following dialog.

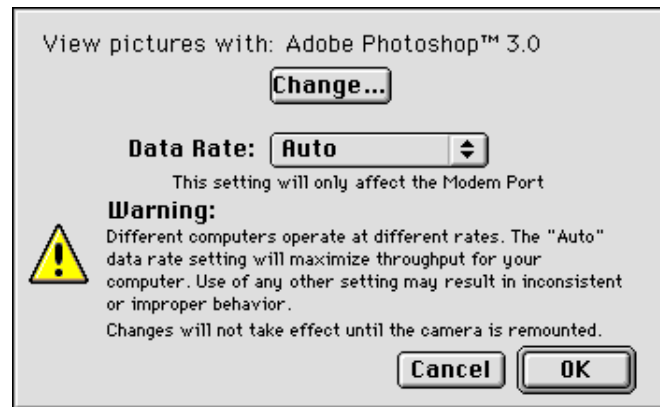


The application currently used to open image files stored in the camera's memory is shown after **View pictures with**. The default is Adobe PhotoDeluxe.

To choose a new application, click the **Change...** button. In the dialog that appears, navigate to a folder containing an application that supports display of JPEG images. Select the application and click **Open**.



The application selection dialog will close. Check that the name of the desired application appears after **View pictures with**.



Click **OK** to return to the CoolPix 900 control panel. Choose **Close** or **Quit** from the **File** menu to save any changes and exit the control panel.

Notes on Using the Camera as a Drive

Nikon View 900 allows the camera's memory to be used in much the same way that you would use any other drive. Note however that certain limitations apply as listed below.

Only one camera is supported at a time:

If two cameras are connected, one to the modem port and the other to the printer port, you can switch between cameras using the Nikon View 900 control panel.

The camera cannot be shared over a network:

The camera will not function as a network drive. Consequently the **CoolPix 900** icon will not be visible to other computers.

The camera's memory is locked:

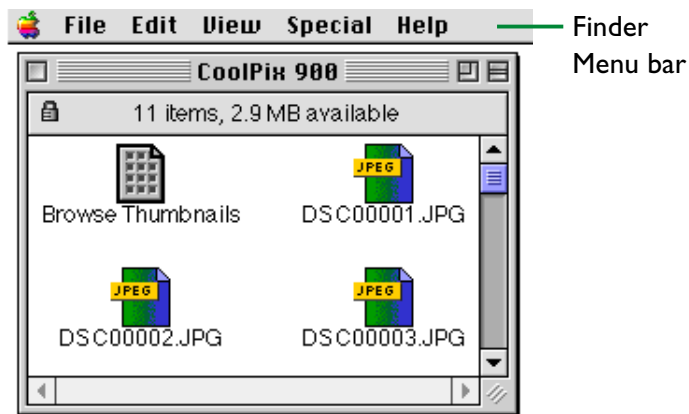
The camera's memory is treated as locked when viewed from the CoolPix 900 folder or the browser window. Files cannot be copied from other folders to the CoolPix 900 folder or browser window, nor can files be saved to the camera after editing in another application. Because the camera functions as a locked drive, images can not be deleted using the computer. Delete images using the camera's delete function. The file names displayed in the CoolPix 900 folder and browser window cannot be changed. Should you wish to change a file name do so after copying the image to disk.

Working with Images

Nikon View 900 enables the camera to be used much as you would any other disk under Mac OS. Images in the camera's memory can be manipulated using the Finder. This chapter describes how to copy images taken with the COOLPIX 900 to disk and how to open them for editing in other applications. These operations are much the same as standard Finder operations; consult your Mac OS manual for details.

Viewing the Items in the Camera's Memory

Once the camera has been connected as a drive as described in the previous chapter, double-clicking the **CoolPix 900** icon opens the CoolPix 900 folder, where the contents of the camera's memory are displayed much as files are displayed when you open any other folder in the Finder.

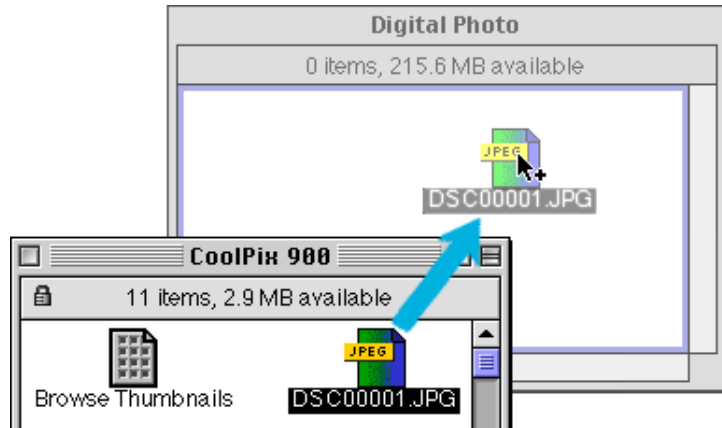


Images can be copied to disk or opened for editing in another application using standard Finder operations, described below.

Note: *When the camera functions as a drive, it is treated as a locked disk. Files cannot be copied or saved to the camera, nor can images in the camera be dragged into the Trash. Use the camera's delete option to delete images from the camera. Similarly, the Finder commands **New Folder**, **Move to Trash**, **Duplicate**, **Make Alias**, **Put Away**, **Eject**, and **Erase Disk** cannot be used on the camera or the images it contains.*

Copying Images to Disk

Images selected in the CoolPix 900 folder can be copied to disk by dragging any of the selected icons over the destination folder and releasing the mouse button.



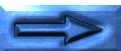
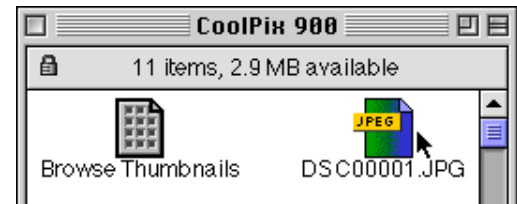
Note: Because the camera functions as a locked drive, images can only be copied, not moved, even if the option key is held down.

Opening Images in Another Application

The images in the CoolPix 900 folder can be opened in the associated application either by double-clicking the image icon or by selecting **Open** from the Finder's **File** menu. Images can also be opened directly from any application that can handle JPEG (".JPG") files.

Opening selected images from the CoolPix 900 folder

In the CoolPix 900 folder, select the images you wish to open by clicking their icons (multiple images can be selected by holding down the **shift** key while clicking each image in turn), then double-click any of the selected thumbnails or choose **Open** from the **File** menu.



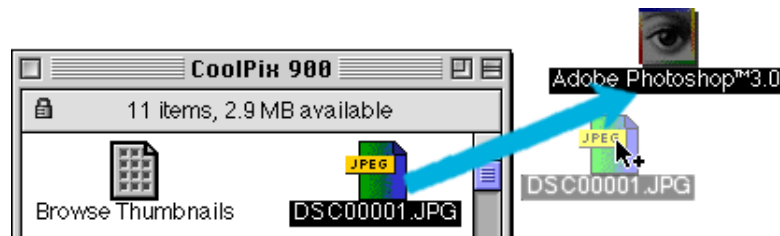
The application will start and the selected images will be opened in windows within the application.



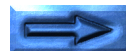
Note: The application used to open camera image files can be selected from the CoolPix 900 control panel. If the specified application is not installed, when you attempt to open an image a dialog will appear prompting you to choose the application to be used. Choose a JPEG-capable application from the dialog box.

Opening selected images by drag and drop

Images selected in the CoolPix 900 folder can be opened in any JPEG-capable application by dragging their thumbnails over the application's icon or alias and releasing the mouse button.

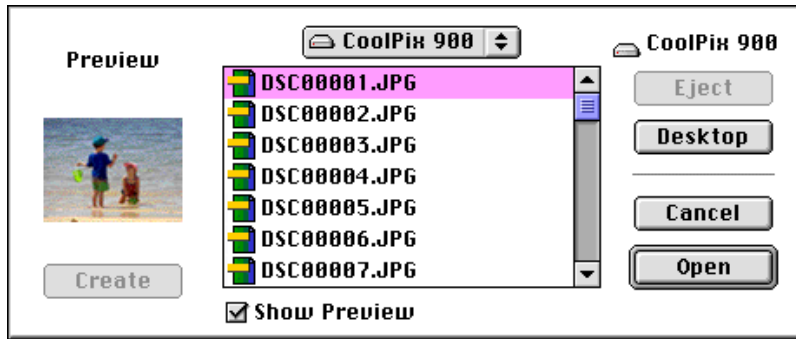


The application will start and the selected images will be opened in windows within the application.



Opening images from the application's Open dialog

Images in the camera can be opened from any application that supports JPEG by choosing **Open...** or **Open File...** from the application's **File** menu. In the Open dialog, navigate to the Desktop, select "CoolPix 900," and click **Open**. The contents of the camera's memory will be displayed. If the application's Open dialog supports preview display, a preview of the image currently selected will appear in the dialog box.



Select the image you wish to open and click the **Open** button to open the image in the application.

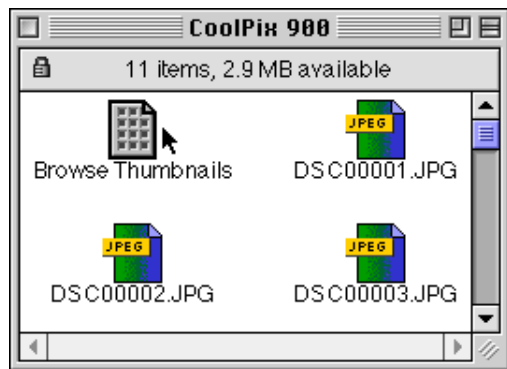
Note: *Previews will not be displayed in the Open dialog box if **Create Thumbnails** has not been selected in the CoolPix 900 control panel.*

Nikon View Browser

Nikon View Browser is a utility that allows you to browse the images in the camera's memory as thumbnail previews. It also incorporates many Finder functions, making it easy to copy or open images while viewing them in preview. This chapter describes how to browse images using **Nikon View Browser**, how to display images in the browser's built-in viewer, how to copy images to disk, and how to open images for editing in other applications.

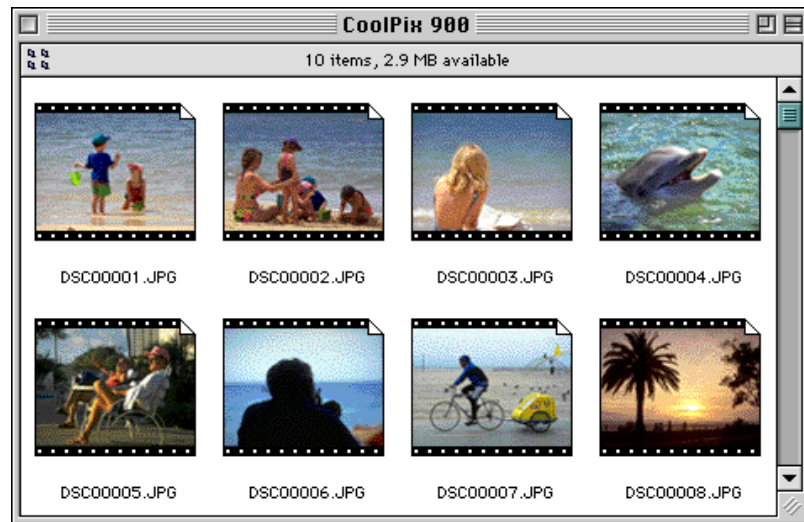
Browsing Images

To start **Nikon View Browser** and view thumbnail previews of the images in the camera's memory, double-click the **Browse Thumbnails** icon in the CoolPix 900 folder.



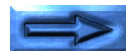
Note: The **Browse Thumbnails** icon is only visible if the **Create Thumbnails** item in the CoolPix 900 control panel was checked when the camera was mounted.

The browser window will open on the desktop and the images in the camera's memory will appear as thumbnails.



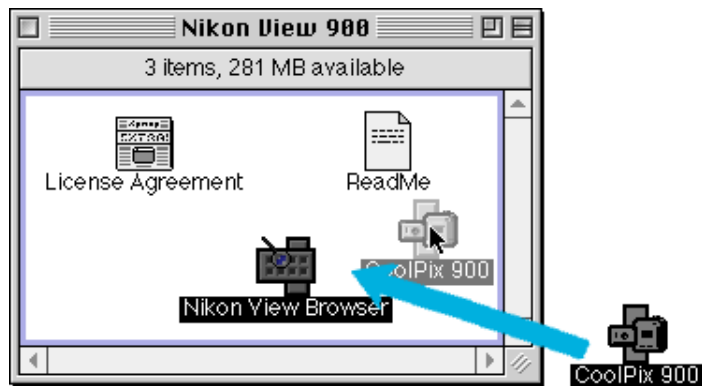
From the browser window, you can select images to be opened in another application, printed, or copied to disk. You can also use the built-in viewer to view images at full resolution. These operations are detailed in the sections that follow.

To exit **Nikon View Browser** and close the browser window, choose **Close Window** or **Quit** from the **File** menu or click the close box at the left end of the browser window's title bar.



Another way of starting Nikon View Browser

Drag the **CoolPix 900** icon over the **Nikon View Browser** icon, which may be found in the folder to which you installed “Nikon View 900,” and release the mouse button.



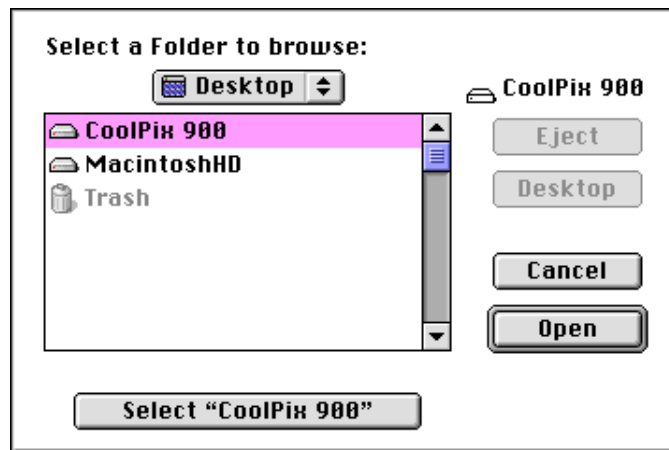
Nikon View Browser will start and the browser window will show thumbnail previews of the images in the camera.

Note: “Nikon View Browser” may be found in the path “(Installation Disk)|(Installation Folder)|Nikon Software|Nikon View 900|Nikon View Browser.”

Nikon View Browser can also be started by double-clicking the **Nikon View Browser** icon.



A dialog will appear prompting you to select a folder to browse. Select “CoolPix 900” in the desktop folder and click **Select**.



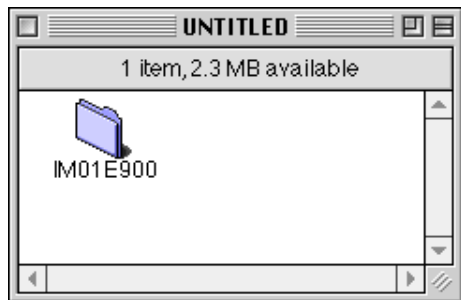
Browsing Compact Flash-Memory Cards

If your computer has a Type II PCMCIA card drive, you can read compact flash-memory cards using a flash-memory adapter (available separately from Nikon). Compact flash memory can also be read using a compact flash card-reader. If a card containing images recorded by the COOLPIX 900 is inserted in either device, its contents can be browsed from the CoolPix 900 folder. If another card is inserted in the camera and the camera connected to your computer, you can simultaneously browse images on the card and images in the camera.

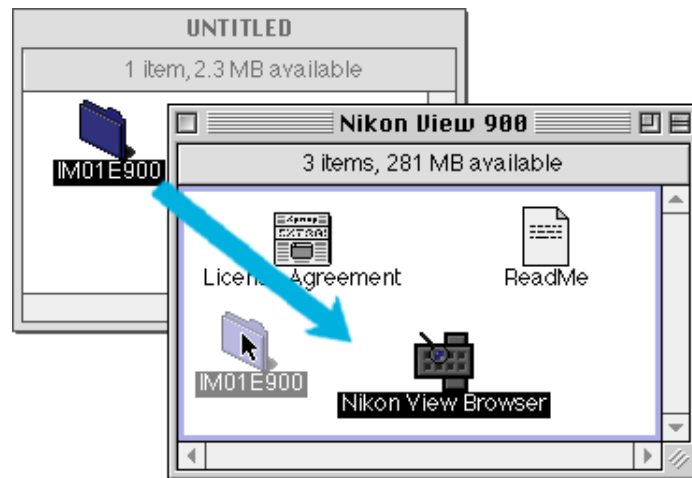
To browse images in a compact flash-memory card after inserting the card in a card slot or card reader, double-click the card icon on the desktop.



The drive folder will open on the desktop. In the case of cards formatted by the COOLPIX 900, this folder will contain a "IM01E900" folder.



The "IM01E900" folder contains images recorded by the COOLPIX 900. Drag this folder "Nikon View 900" over the **Nikon View Browser** icon and release the mouse button.



Note: "Nikon View Browser" may be found in the path "(Installation Disk)|(Installation Folder)|Nikon Software|Nikon View 900|Nikon View Browser."



The browser window will open, showing the images recorded on the card as thumbnail previews.



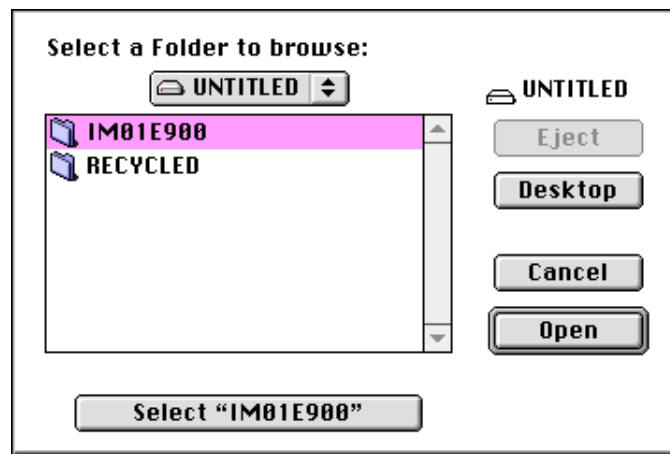
To exit *Nikon View Browser* and close the browser window, choose **Close Window** or **Quit** from the **File** menu or click the close box at the left end of the browser window's title bar.

Another way of starting Nikon View Browser

Nikon View Browser can also be started by double-clicking the **Nikon View Browser** icon.



A dialog will appear prompting you to select a folder to browse. Navigate to the drive containing the compact flash-memory card, select the "IM01E900" folder, and click **Select**.

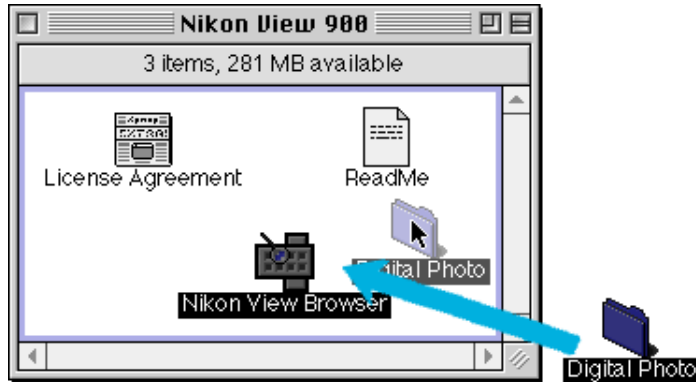


Nikon View Browser will start and the browser window will show thumbnails of the images on the flash-memory card.

Note: If you copy the **Browse Thumbnails** icon from the *CoolPix 900* folder to the "IM01E900" folder, you can start Nikon View Browser by double-clicking the copy of the **Browse Thumbnails** icon.

Browsing Images on Disk

Nikon View Browser can also be used to browse JPEG images on disk. Select the folder containing the images you wish to browse, drag it over the **Nikon View Browser** icon in the “Nikon View 900” folder, and release the mouse button.



Note: “Nikon View Browser” may be found in the path “(Installation Disk)|(Installation Folder)|Nikon Software|Nikon View 900|Nikon View Browser.”

The browser window will open, showing the images in the folder as thumbnail previews.



To exit **Nikon View Browser** and close the browser window, choose **Close Window** or **Quit** from the **File** menu or click the close box at the left end of the browser window's title bar.

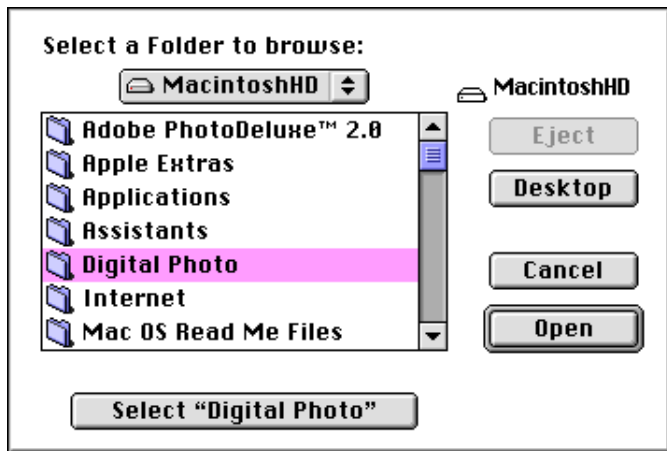


Another way of starting Nikon View Browser

Nikon View Browser can also be started by double-clicking the **Nikon View Browser** icon.



A dialog will appear prompting you to select a folder to browse. Select the desired folder and click **Select**.



Nikon View Browser will start and the browser window will show thumbnails of the images in the selected folder.

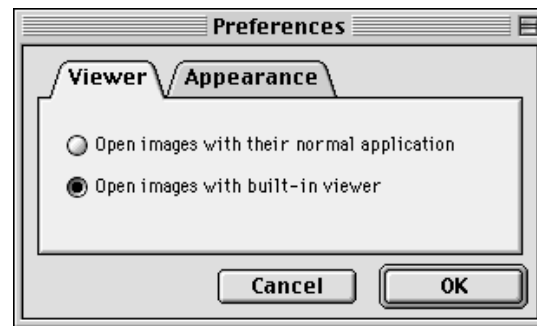
Note: If you copy the **Browse Thumbnails** icon from the CoolPix 900 folder to a folder containing JPEG images, you can start Nikon View Browser to view the images in the folder by double-clicking the copy of the **Browse Thumbnails** icon.

Viewing Images with the Built-in Viewer

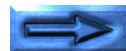
Images previewed in Nikon View Browser can be viewed at full resolution using the browser's built-in viewer. The viewer also offers zoom-in, zoom-out, and scroll functions. To select the built-in viewer as the application used when opening images from the browser, choose **Preferences...** from the browser **Edit** menu.



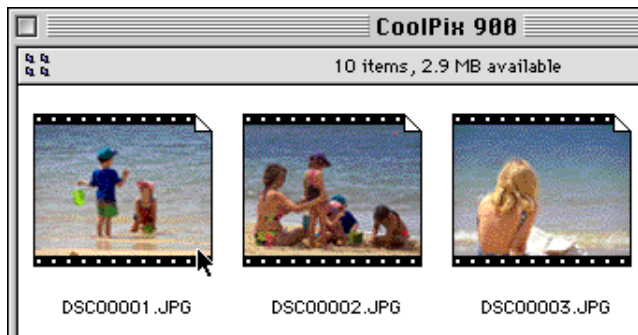
The Preferences dialog will appear. Click the **Viewer** tab.



Select **Open images with built-in viewer** and click **OK**.





In the browser window, select the images you wish to view and double click any of the images or choose **Open** from the **File** menu to start the built-in viewer.



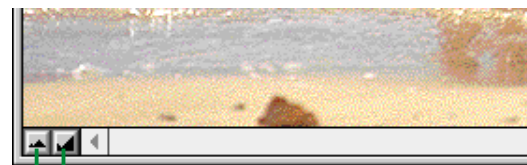
The selected images will be opened at full resolution in separate image windows.



Zooming the image in and out

When moved over an image window with the command (**⌘**) key held down, the cursor takes the shape of a magnifying glass () . Click anywhere on the image with the command (**⌘**) key held down to zoom the image in. Pressing the **option** key on the keyboard changes the cursor to a magnifying glass with containing a minus sign () . Clicking anywhere in the image while holding down the **option** key will zoom the image out.

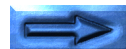
The image can also be zoomed in and out by clicking the zoom-in and zoom-out buttons at its lower left corner. Clicking the zoom-out button zooms the image out and reduces the size of the window to fit the image. Clicking the zoom-in button zooms the image in and enlarges the window to fit the image.



Zoom-in button

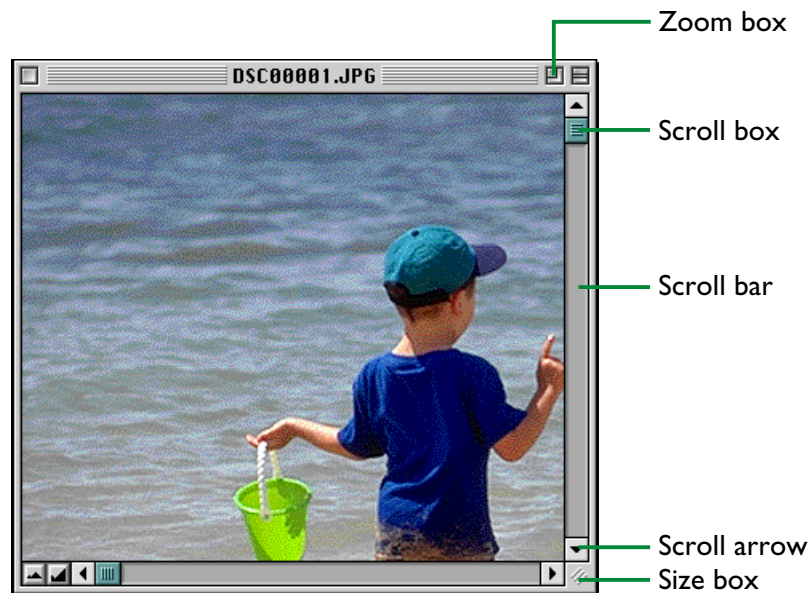
Zoom-out button

Note: Zoom operations have no effect on the thumbnails in the browser window.



Scrolling and resizing image windows

When the entire image does not fit in the image window, you can view the hidden portion by dragging the scroll boxes at the right and bottom of the window, or by clicking the scroll bars or scroll arrows. If you move the cursor over the image, the cursor will take the shape of a hand (☞), and the image can be scrolled by dragging it.



Alternatively, you can enlarge the window itself dragging the size box at its lower right corner.

If there is enough space on the desktop, the entire image can be viewed at its current zoom ratio by clicking the zoom box at the top right corner of the image window. The image window will be either enlarged to show the entire image or, if the image is larger than the desktop, enlarged to fill the desktop.

Closing image windows

The active image window can be closed by choosing **Close Window** from the **File** menu or clicking the close box at the left end of the title bar.

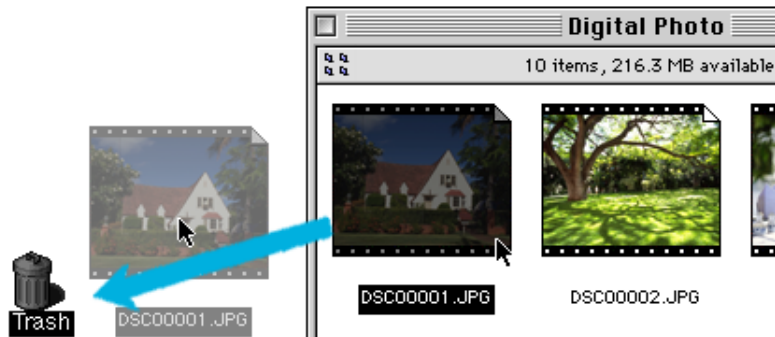
Deleting Images

When browsing images on disk or on a compact flash-memory card, you can delete images by moving their associated thumbnails to the trash.

Note: *Because the camera functions as a locked disk, images in the camera can not be deleted from the browser. Use the camera's delete option to delete images stored in the camera's memory.*

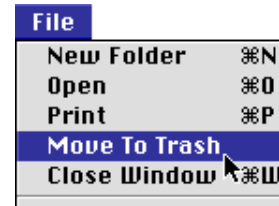
Dragging images into the Trash

Images can be moved to the Trash by dragging their associated thumbnails over the Trash icon and releasing the mouse button.



Using the Move to Trash

Images can also be moved to the Trash by selecting their thumbnails in the browser window and choosing **Move to Trash** from the **File** menu.



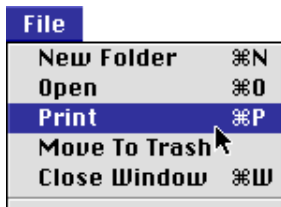
To permanently delete the images, select **Empty Trash** from the **Special** menu.

Printing Images

Images selected in the browser window can be printed by choosing the **Print** command from the **File** menu. Images displayed in the built-in viewer can also be printed from the image window as described below.

Printing images from the browser window

Images in the browser window can be printed in any application that supports JPEG. To print images, select the associated thumbnails and choose **Print** from the **File** menu.



If you are opening images currently stored in or that have been copied from the camera's memory, the application specified in the CoolPix 900 control panel will start and the Print dialog will be displayed. Make such changes to printer settings as you desire and print the images.

Note: *In order to open images in compact flash-memory cards, you will need to use Macintosh PC Exchange or a similar control panel to associate the DOS file suffix (extension) “.JPG” with an application capable of opening JPEG files. See “Opening Images in Another Application,” below.*

Printing from the image window

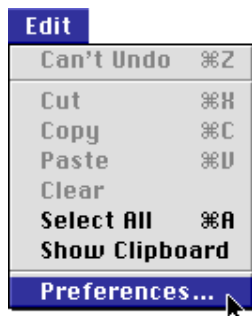
Images displayed in image windows in the built-in viewer can be printed by selecting **Print Window...** from the **File** menu.



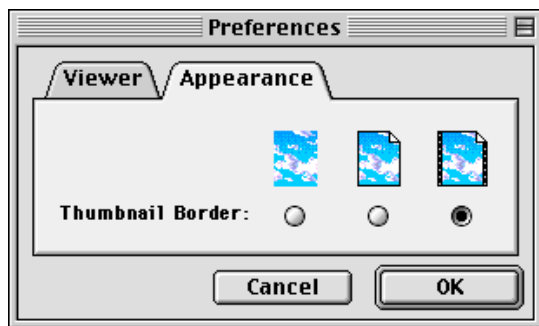
The print dialog box for the printer currently selected in the Chooser will be displayed. Print the image after adjusting printer settings. If multiple image windows are open, only the image in the currently active window will be printed.

Changing the Appearance of Thumbnails

By default, thumbnail previews in the browser window are displayed in a “film-strip” style frame. You can choose to display images in a document-style frame or with no frame at all by choosing **Preferences...** from the **Edit** menu.



The Preferences dialog will be displayed. Click the **Appearance** tab.



Choose a frame from the list of **Thumbnail Border** radio buttons.



(No border)

When this button is selected, thumbnails will be displayed without a frame.



(Document border)

When this button is selected, thumbnails will be displayed in a document-style frame, as shown at right.



(Film-strip border)

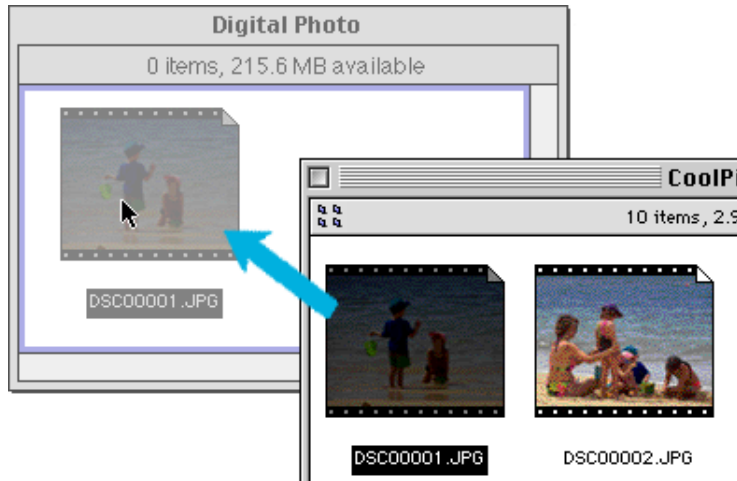
When this button is selected, thumbnails will be displayed in a film-strip frame.



After choosing the desired style, click **OK**. The thumbnails in the browser window will be displayed in the selected frame. Clicking **Cancel** closes the Preferences dialog without changing the frame style.

Copying Images to Disk

Selected images in the browser window can be copied to disk by dragging any of the selected thumbnails over the destination folder and releasing the mouse button.

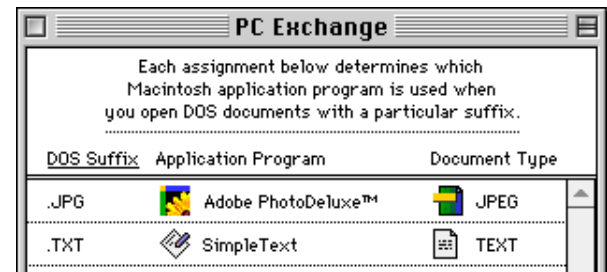


Note: Because the camera functions as a locked drive, images can only be copied, not moved, even if the option key is held down.

Opening Images in Another Application

When a thumbnail is double-clicked or a thumbnail is selected and **Open** chosen from the browser **File** menu, the image will be opened in the application specified for the purpose in the CoolPix 900 control panel. Images can also be opened directly from any application that can handle JPEG (".JPG") files.

Note: When images are read directly from the camera, the creator program is set to the application shown after **View pictures with** in the CoolPix 900 control panel. If the specified application is installed on your system, double-clicking images in the camera will open them in the application. When read directly from the camera's flash-memory cards, however, images are treated as DOS files with no creator. In order to open such images with a double click, you will need to use Macintosh PC Exchange or a similar control panel to associate the DOS file suffix (extension) ".JPG" with Adobe PhotoDeluxe or another application capable of opening JPEG images.



The same restriction applies to images copied directly from flash-memory cards.



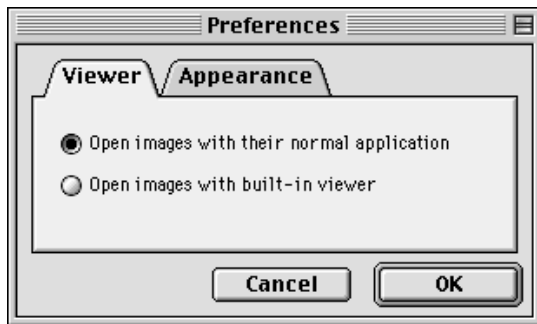
Opening selected images from the browser

Before opening images from the browser, you must choose

Open images with their normal application in the *Nikon View Browser* Preferences dialog. To open the Preferences dialog, choose **Preferences...** from the **Edit** menu.



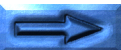
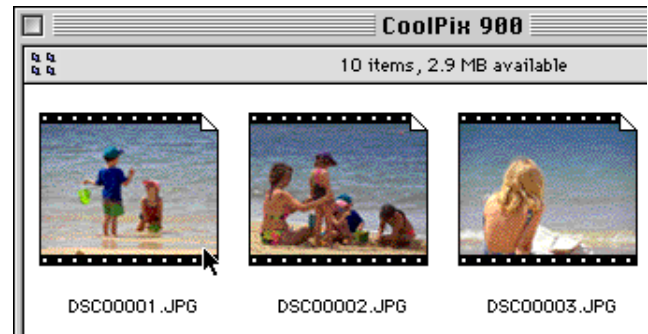
The Preferences dialog will appear. Click the **Viewer** tab.



Select **Open images with their normal application** and click **OK**.

In the browser window, select the images you wish to open by clicking their thumbnails (multiple images can be selected by holding down the **shift** key while clicking each image in turn), then double-click any of the selected thumbnails or choose

Open from the **File** menu.



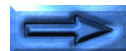
The selected images will be opened in windows within the associated application.



Note: The application used to open camera image files can be selected from the CoolPix 900 control panel. If the specified application is not installed, when you attempt to open an image a dialog will appear prompting you to choose the application to be used. Choose a JPEG-capable application from the dialog box.

Opening selected images by drag and drop

Selected images can be opened in any application that supports JPEG by dragging their thumbnails over the application's icon or alias and releasing the mouse button.

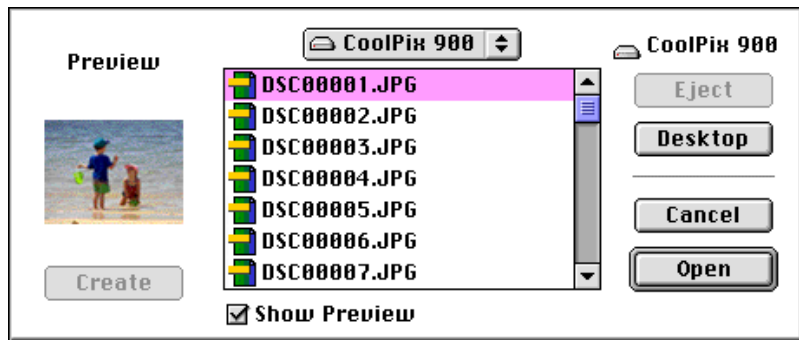


The application will start and the selected images will be opened in windows within the application.



Opening images from the application's Open dialog

Images in the camera can be opened from any application that supports JPEG by choosing **Open...** or **Open File...** from the application's **File** menu. In the Open dialog, navigate to the Desktop, select "CoolPix 900," and click **Open**. The contents of the camera's memory will be displayed. If the application's Open dialog supports preview display, a preview of the image currently selected will appear in the dialog box.



Select the image you wish to open and click the **Open** button to open the image in the application.

Note: *Previews will not be displayed in the Open dialog box if **Create Thumbnails** has not been selected in the CoolPix 900 control panel.*

Nikon View 900 Reference

This chapter provides a brief reference guide to *Nikon View 900*'s main windows and menus. Refer to this guide when you want to know the meaning of a command or button. Window operations are detailed in “*Getting Started*,” “*Working with Images*,” and “*Nikon View Browser*.”

Nikon View 900 Control Strip Item

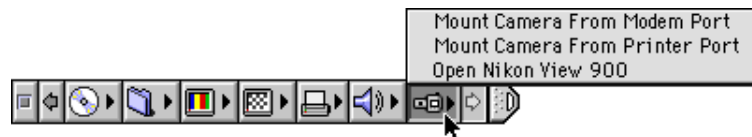
When *Nikon View 900* is installed, a *Nikon View 900* item is added to the Macintosh control strip (note that as not all Macintosh computers support the control strip function, you may not be able to use this item on your computer). This item can be used for easy access to such operations as mounting and unmounting the camera. It also allows you direct access to image files without using *Nikon View Browser* or opening the CoolPix 900 folder.



Note: *If the control strip is not visible on the desktop, it can be displayed by choosing **Control Strip** from the **Control Panels** submenu of the Apple menu () and selecting the **Show Control Strip** radio button.*

The functions of the *Nikon View 900* item are described below.

The control strip menu when the camera is not mounted



Mount Camera From Modem Port

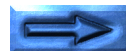
Mount the camera currently connected to the computer's modem port.

Mount Camera From Printer Port

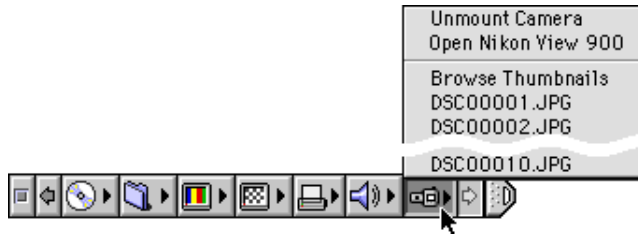
Mount a camera connected to the printer port.

Open Nikon View 900

Opens the CoolPix 900 control panel, which can be used to mount or unmount the camera and make changes to such options as cache size and port speed.



The control strip menu when the camera is mounted



Unmount Camera

Remove a currently mounted camera from the desktop.

Open Nikon View 900

Opens the CoolPix 900 control panel, which can be used to mount or unmount the camera and make changes to such options as cache size and port speed.

Browse Thumbnails

Starts *Nikon View Browser*.

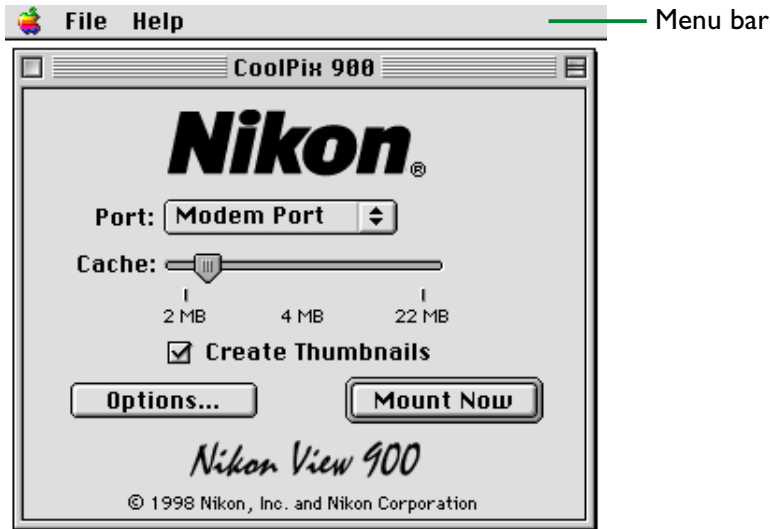
Note: The **Browse Thumbnails** command is only visible if the **Create Thumbnails** item in the CoolPix 900 control panel was checked when the camera was mounted.

Image files

The image files currently in the camera's memory are listed at the bottom of the menu. Selecting a file causes it to be opened in the application specified in the CoolPix 900 control panel.

The CoolPix 900 Control Panel

The CoolPix 900 control panel allows you to specify a port for camera connection, connect the camera as a drive, and set the cache memory size. It also offers control over port speed and allows you to choose the application used to open image files in the camera's memory. To open the control panel, select **Nikon View 900** from the **Control Panels** submenu of the Apple menu (🍏).



The functions of the CoolPix 900 control panel are described below.

The Menu Bar



The commands available in each menu are outlined below.

The Apple Menu (🍏)

In addition to the usual Apple menu items, the Apple menu contains an **About Nikon View 900...** option when the CoolPix 900 control panel is open.



About Nikon View 900...

Gives copyright information for *Nikon View 900*. Click anywhere within the About dialog box to clear it from the screen.



The File Menu



Close (⌘W)

Returns you to the finder, saving changes to settings.

Quit (⌘Q)

Saves any changes to settings and returns you to the finder.

The Help Menu



About Balloon Help...

Provides an explanation of the Finder's "Balloon Help" function.

Show Balloons/Hide Balloons

Turns Balloon Help on or off.

Options

The options in the CoolPix 900 control panel are listed below.

Port

Click the arrow button to the right of this option to choose a port from a pop-up menu. The following choices are available:

Modem Port Select the camera connected to the modem port

Printer Port Select the camera connected to the printer port

Note: *PowerBook users who have connected the camera to the printer/external modem port should turn AppleTalk off and then select "Modem Port" in the CoolPix 900 control panel.*

Cache

Choose a cache memory size using this slider. When the camera is first connected as a drive, image data from the camera are stored temporarily in cache memory. When thumbnails are displayed or images copied from the camera to disk or opened in other applications, data will be read from the memory cache, speeding processing. The larger the size of the cache, the more noticeable the effect will be. It is recommended that you specify as large a cache as your computer's free memory will allow.



Create Thumbnails

When this box is checked, thumbnail previews of the images in the camera will be created when the camera is first connected as a drive. These thumbnails will be displayed in **Nikon View Browser** and in the Open dialog box viewing images in the CoolPix 900 drive. A **Browse Thumbnails** icon will also be visible in the CoolPix 900 folder (this folder shows the contents of the camera's memory). Double-clicking this icon will start **Nikon View Browser**.

Options...

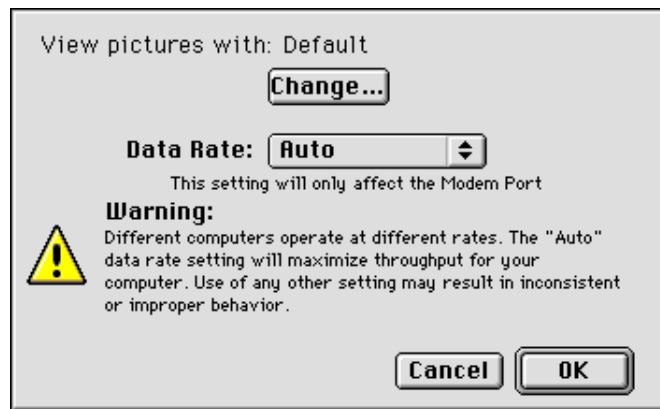
When this button is clicked, a dialog appears allowing you to choose the application that opens camera files and to set the speed of the connection between the camera and the computer's modem port. See "**The Options dialog box**," below, for more information on the settings available in this dialog.

Mount Now

Clicking this button causes the camera connected to the selected port to appear on the desktop as a drive, indicated by the **CoolPix 900** icon. When the camera is displayed on the desktop, this button changes to **Unmount Now**. Clicking this button removes the camera from the desktop.

The Options dialog box

Clicking **Options...** in the CoolPix 900 control panel displays the following Options dialog:



The options in this dialog box are listed below.

View pictures with

The name of the application used to open image files in the camera's memory is listed here. By default, the application used is Adobe PhotoDeluxe. To use a different application, click the **Change...** button. In the dialog that appears, navigate to a folder containing an application that supports viewing of JPEG images and double-click the application to select it (for details, see "**Getting Started: Choosing a Viewer for Camera Image Files**").



Data Rate

The data transfer rate used when the camera is connected to the computer via the modem port can be chosen from this pop-up menu. Choose **Auto** to have *Nikon View 900* automatically select a speed suited to your Macintosh.

Note: *Depending on your set-up, auto data-rate detection may not perform as expected. Should you experience problems reading the data stored in the camera, select a new speed from the **Data Rate** menu. If you still experience difficulties at the highest available rate, choose successively lower speeds until you find one that works.*

Cancel

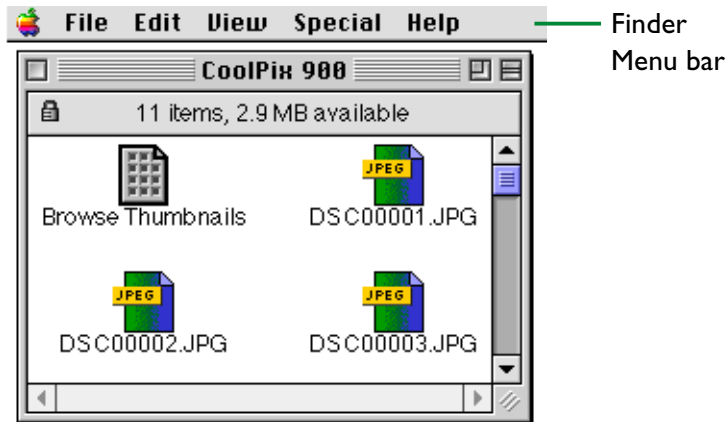
Cancel any changes to settings and return to the CoolPix 900 control panel.

OK

Return to the CoolPix 900 control panel, saving any changes to settings.

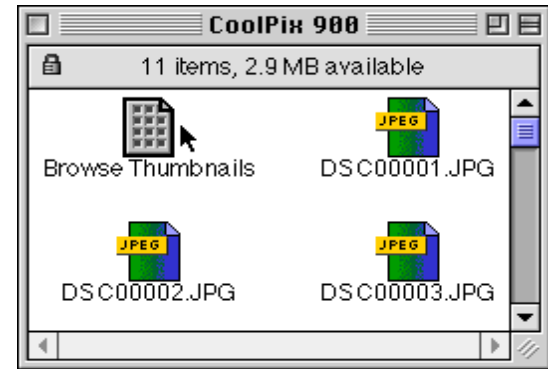
The CoolPix 900 Folder

The CoolPix 900 folder shows the contents of the camera's memory in the Finder. Images can be handled in the same way as files on an ordinary locked disk. To open the folder, double-click the **CoolPix 900** icon.



Note: When the camera functions as a drive, it is treated as a locked disk. Files cannot be copied or saved to the camera, nor can images in the camera be dragged into the Trash. Use the camera's delete option to delete images from the camera. Similarly, the Finder commands **New Folder**, **Move to Trash**, **Duplicate**, **Make Alias**, **Put Away**, **Eject**, and **Erase Disk** cannot be used on the camera or the images it contains.

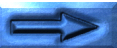
Double-clicking the **Browse Thumbnails** icon in the CoolPix 900 folder starts *Nikon View Browser*.



Note: The **Browse Thumbnails** icon is only visible if the **Create Thumbnails** item in the CoolPix 900 control panel was checked when the camera was mounted.

The Browser Window

This is the *Nikon View Browser* window. The browser window shows JPEG image files in the camera's memory, compact flash-memory cards, or any other drive or folder as thumbnail previews.



To open the browser window, double-click the **Browse Thumbnails** icon in the CoolPix 900 folder or drag and drop the **CoolPix 900** onto the **Nikon View Browser** icon.

The browser window offers the functions listed below.

Browsing images

Thumbnail previews of the images in the CoolPix 900 folder are shown in the browser window. The browser window can also be used to browse other folders, as described in “**Nikon View Browser.**”

File handling

Images can be opened by double-clicking a thumbnail or copied to disk by drag-and-drop.

Displaying images with the built-in viewer

Images can be displayed at full resolution using the built-in viewer.

The functions of the various parts of the browser windows are described below.

The Menu Bar



The menus in the menu bar allow you to manage images in the camera's memory or in other folders. The commands available in each menu are outlined below. A more complete description of the tasks that may be performed using the menu commands may be found in the chapter, “**Nikon View Browser.**”

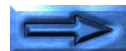
The Apple Menu (🍏)

In addition to the usual Apple menu items, the Apple menu contains an **About Nikon View Browser...** option when the browser window is active.



About Nikon View Browser...

Gives copyright information for *Nikon View Browser*. Click anywhere within the About dialog box to clear it from the screen.



The File Menu

File	
New Folder	⌘N
Open	⌘O
Print	⌘P
Move To Trash	
Close Window	⌘W
Get Info	⌘I
Label	▶
Sharing...	
Duplicate	⌘D
Make Alias	⌘M
Put Away	⌘Y
Find...	⌘F
Show Original	⌘R
Page Setup...	
Print Window...	
Quit	⌘Q

New Folder (⌘N)

Creates a new folder. Note however that as the camera is locked, this command is not available for images in the CoolPix 900 folder.

Open (⌘O)

Opens selected images in the built-in viewer or in the creating application, depending on what settings have been chosen in the Preferences dialog box.

Print (⌘P)

Selected images will be opened in the creating application, and the application's Print dialog will be opened allowing you to make changes to printer settings and print the image.

Move to Trash

Moves selected images to the Trash. Note however that as the camera is locked, this command is not available for images in the CoolPix 900 folder.

Close Window (⌘W)

Closes the browser window and ends your current session of **Nikon View Browser**. Clicking the close box at the left end of the title bar has the same effect.

Get Info (⌘I)

Displays information on the selected files or folders.

Label

Changes the label for the selected files.

Sharing...

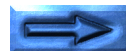
This command cannot be selected from the browser window.

Duplicate (⌘D)

Creates copies of the selected files or folders. Note however that as the camera is locked, this command is not available for images in the CoolPix 900 folder.

Make Alias (⌘M)

Creates an alias for the selected files or folders. Note however that as the camera is locked, this command is not available for images in the CoolPix 900 folder.



Put Away (⌘Y)

Returns files that have been placed on the desktop to the browser window. This command can be used when you have selected items on the desktop in the Finder. Note however that as the camera is locked, this command is not available for images in the CoolPix 900 folder.

Find... (⌘F)

Displays Find File dialog box.

Show Original (⌘R)

This command cannot be selected from the browser window.

Page Setup...

Brings up a dialog box which allows you change printer settings such as paper size and orientation.

Print Window...

Prints the browser window.

Quit (⌘Q)

Closes the browser window and ends your current session of *Nikon View Browser*.

The Edit Menu



Can't Undo (⌘Z)

Cut (⌘X) / Copy (⌘C) / Paste (⌘V) / Clear

These commands are not available in the browser window.

Select All (⌘A)

Selects all the images in the browser window for copying, printing, or deletion.

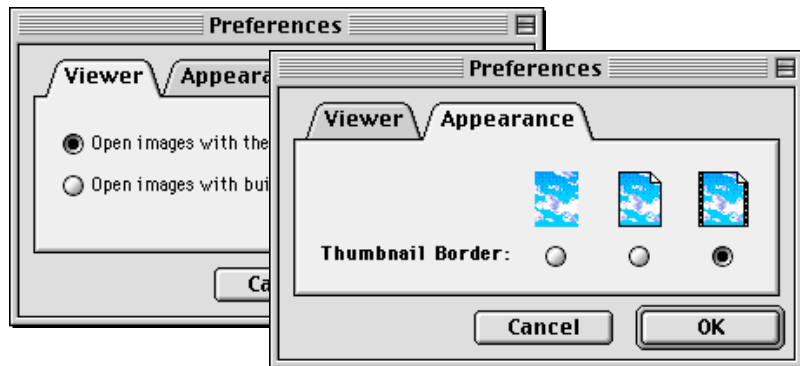
Show Clipboard

Displays the contents of the clipboard.



Preferences...

Opens the Preferences dialog box, where you can choose whether to open images in the built-in browser or in another application and set the appearance of the thumbnails in the browser window.



The View Menu



as Icons / as Buttons / as List

as Window / as Pop-up Window / Clean Up

These commands cannot be accessed from the browser window.

Arrange

Orders the thumbnails in the browser by “Name”, “Date Modified”, “Date Created”, “Size”, “Kind”, or “Label.”

View Options...

Opens the View Options dialog for the browser window.



The Special Menu



Empty Trash...

Deletes all items in the Trash.

Eject Disk

This command is not available in the browser window.

Erase Disk...

This command is not available in the browser window.

Sleep

Puts the system into sleep mode. Normal operation can be restored by pressing any key on the keyboard.

Restart

Ends the current session of *Nikon View Browser* and any other open applications and restarts the system.

Shut Down

Ends the current session of *Nikon View Browser* and any other open applications and turns off the computer.

The Help Menu



About Balloon Help...

Provides an explanation of the Finder's "Balloon Help" function.

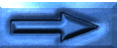
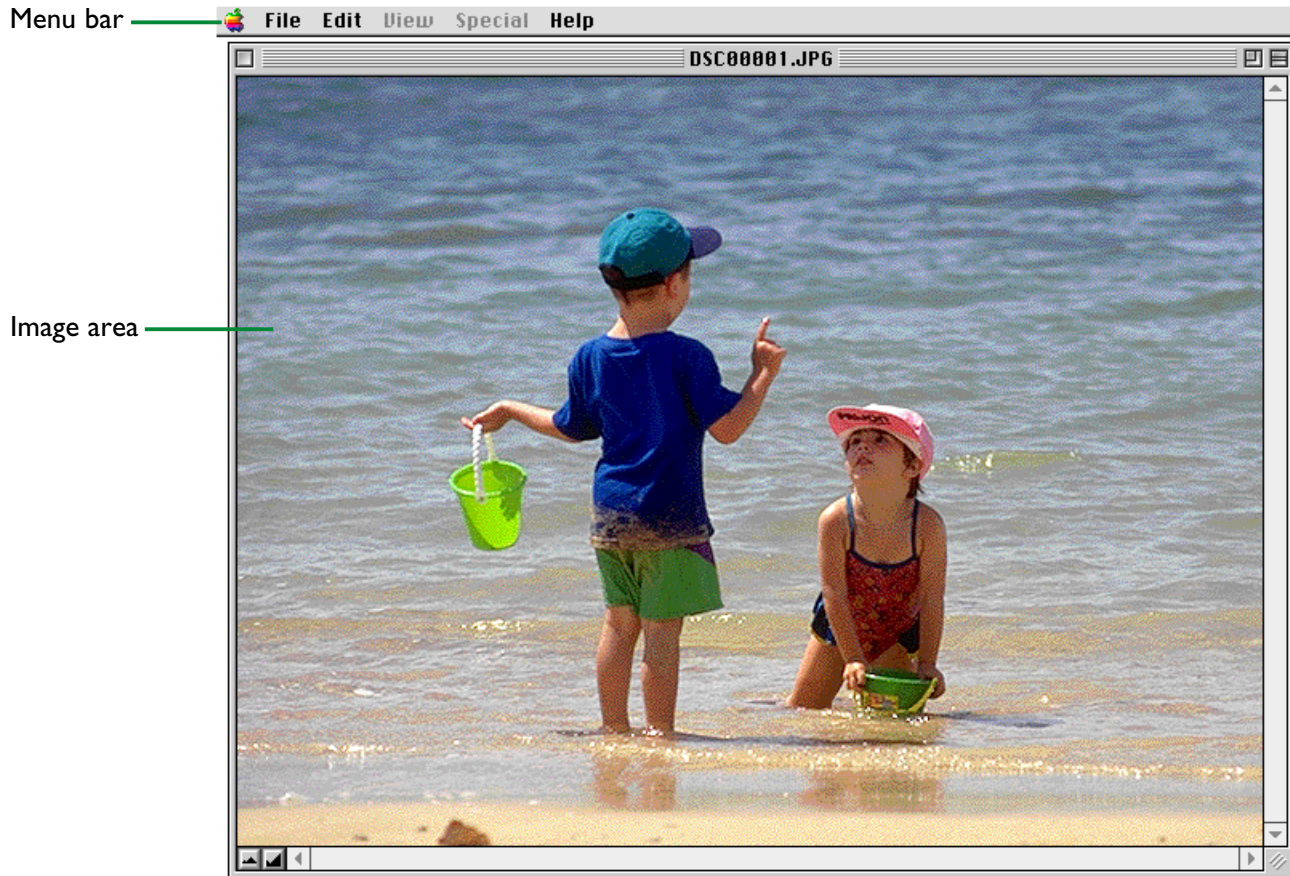
Show Balloons/Hide Balloons

Turns Balloon Help on or off.

Image Windows

Image windows are where images opened in *Nikon View Browser*'s built-in viewer are displayed.

If **Open images with built-in viewer** is selected in the browser window Preferences dialog, images will be opened at full resolution in image windows when a selected thumbnail is double-clicked in the browser, or when **Open** is chosen from the browser-window **File** menu. Any number of image windows may be open simultaneously.



The functions of the image window are described below.

The Menu Bar



The commands available in each menu are outlined below. A more complete description of the tasks that may be performed using the menu commands may be found in the chapter, “Nikon View Browser.”

The Apple Menu (🍏)

In addition to the usual Apple menu items, the Apple menu contains an **About Nikon View Browser...** option when an image window is active.



About Nikon View Browser...

Gives copyright information for *Nikon View Browser*. Click anywhere within the About dialog box to clear it from the screen.

The File Menu



New Folder (⌘N) / Open (⌘O) / Print (⌘P)

Move to Trash

These commands are always grayed out and unavailable.

Close Window (⌘W)

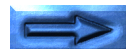
Closes the active image window.

Get Info (⌘I) / Label / Sharing... / Duplicate (⌘D)

Make Alias (⌘M) / Put Away (⌘Y)

Find (⌘F) / Show Original (⌘R)

These commands are always grayed out and unavailable.



Page Setup...

Brings up a dialog box which allows you change printer settings such as paper size and orientation.

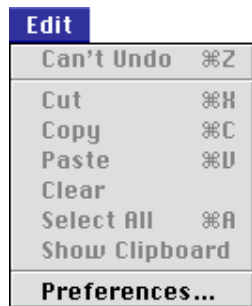
Print Window...

Prints the image in the active image window.

Quit (⌘ Q)

Ends your current session of *Nikon View Browser*.

The Edit Menu



Can't Undo (⌘Z) / Cut (⌘X) / Copy (⌘C)

Paste (⌘V) / Clear / Select All (⌘A)

Show Clipboard

These commands are always grayed out and unavailable.

Preferences...

Opens the browser window Preferences dialog shown in "*The Browser Window*," above.

The View Menu

The View menu is always grayed out and unavailable.

The Special Menu

The Special menu is always grayed out and unavailable.

The Help Menu

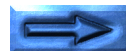


About Balloon Help...

Provides an explanation of the Finder's "Balloon Help" function.

Show Balloons/Hide Balloons

Turns Balloon Help on or off.



The Image Area

Images are displayed at full resolution in the image area. When the cursor is moved over the image area, the shape of the cursor will change as described below.



This is the cursor displayed when the mouse is over the image window. Drag to scroll the image.



This cursor is displayed when the command (⌘) key is held down. Click to zoom in on the image.



This cursor is displayed when the **option** key is held down. Click to zoom the image out.

Note: *Zoom operations have no effect on the thumbnail in the browser window.*